

Maryland

F Rare

189

.B1W5

vol.1

cop.2

BALTIMORE
MERCHANTS AND
MANUFACTURERS
DIRECTORY
with Compliments to TRADE of
MARYLAND.

THE MONUMENTAL CITY

OPENS WIDE HER GATES

AND GIVES TO ALL A WELCOME.



“WHO COMES WITHIN HER WALLS IS SAFE.”

$\frac{9}{2}$

BALTIMORE

Merchants' and Manufacturers'

DIRECTORY.

ed. by
By Z. F. WILLIAMS.

This work is neither devoted to history nor art. It fills more nearly the average business want, as a guide to Baltimore's leading industries; and while a goodly number of our prominent firms may not appear, those constituting this book will readily be recognized, in many cases, as not only among the first and best in their lines in this city, but in this country.

BALTIMORE :
PRESS OF ISAAC FRIEDENWALD,
32 South Paca Street.
1887.

Magellan's Voy.

1492

1493

1494

1495

1496

1497

1498

1499

1500

1501

Entered according to Act of Congress, in the year 1887, by
Z. F. WILLIAMS,
In the office of the Librarian of Congress, at Washington, D. C.

TO CHARLES MARKELL, ESQ.

It seems very proper that a work like this, embracing the principal industries of a great city and furnishing the names of very many of the leading houses engaged in those industries, should pay its tribute to both worth and enterprise by its dedication to one of Baltimore's MOST ACTIVE, USEFUL and HONORED SONS.

Some one has said that "success succeeds." I would rather say that success won at the expense of self-respect and the respect of those around us is, after all, but a moral poverty, and worse than failure. The FULLNESS OF SUCCESS must and can only come from energetic persistence in the right, linked to a policy of truth and honesty, and which, like a chain of iron made for strength and endurance, is appreciated more and more after every trial, which proves the genuineness of the metal of which it is made.

It is with pride that I call to mind, and pass in review, a goodly number of our business men who have attained true success, whether in possessing a wealth of dollars or a wealth of character, or both; and among the leading ones, whether as dealer, importer or manufacturer—whether as a gentleman, friend or Christian—pre-eminently stands CHARLES MARKELL.

Z. F. W.

Index to Classifications.

	PAGES.
Agents—Manufacturers' Agents.....	See Commission Merchants.
Agricultural Implements.....	11, 13
Alcohol.....	102
Artists' Materials.....	13
Awnings, Tents, &c.....	15
Bag Manufacturers.....	15
Bakers—Steam.....	15, 17
Bankers and Brokers.....	17
Banks.....	17, 19, 21
Barrel Dealers and Coopers.....	21
Bedding, Mattresses, &c.....	See Curled Hair Manufacturers.
Belting Manufacturers.....	23
Boiler Makers.....	23
Boots and Shoes.....	23, 25
Bottlers.....	25
Brass Goods—Sheet Brass, Tubing, Wire, &c.....	25
Bricks.....	See Terra-Cotta. Also see Lime, Hair, &c.
Brooms and Baskets.....	See Woodenware.
Brushes.....	27
Building Materials.....	27
Burr Millstones.....	See Mill Furnishings.
Butter, Cheese, &c.....	See Commission Merchants.
Cabinet Makers.....	See Furniture Manufacturers.
Candy.....	See Confectionery.
Card and Card Boards.....	See Paper Warehouses.
Carpets, Mattings and Oil Cloths.....	29
Carriage Goods, Hardware, &c.....	29, 31
Carriages—Children's.....	See Toys, &c
Cattle Powders.....	See Horse and Cattle Powders.
Cement, Plaster, &c.....	31
Chair Makers.....	See Furniture Manufacturers.
Chemicals, &c.....	See Fertilizers.
China, Glass and Queensware.....	33
Cider and Vinegar.....	33
Cigars.....	See Tobacco, Cigars, &c.
Clocks.....	35
Clothing—Retail.....	35
Coal Oil.....	See Oil Dealers and Refiners.
Coal-Tar Products.....	37
Coffee—Roasted.....	37
Commission Merchants—Agents (Manufacturers' Agents).....	37, 39, 41
" " Butter, Cheese, &c.....	37, 39, 41
" " General.....	37, 39, 41
" " Hides, Leather, &c.....	37, 39, 41
" " Furs, Skins, &c.....	37, 39, 41
" " Produce, Poultry, &c.....	37, 39, 41
" " Wool, &c.....	37, 39, 41
Confectionery.....	41
Coopers.....	See Barrel Dealers.
Cork Cutters and Dealers.....	43
Cotton Yarns, Twines, &c.....	43
Curled Hair, &c.....	43

	PAGES.
Diamonds.....	See Jewelry.
Drain Pipes and Tiles.....	See Terra-Cotta.
Druggists.....	45, 47
Druggists' Glassware.....	See Glass Manufacturers.
Dry Goods—Retail.....	47
Dry Goods—Wholesale.....	49
Dyers.....	49
Dye Stuffs.....	51
Electric Stores and Supplies.....	51
Engineers.....	See Machinists.
Engineers' Supplies.....	See Machinery.
Engravers—Dies, Seals, Stencils, &c.....	51
Fancy Goods and Notions.....	See Notions and Fancy Goods.
Fertilizers, Guano, &c.....	53, 55, 57, 59, 61
Fishing Tackle, Twines, &c.....	61
Flag Manufacturers.....	See Awnings, Tents, &c.
Flavoring Extracts.....	108
Flour—Millers and Dealers.....	63
Fruit—Foreign.....	65
Furnaces, Ranges, &c.....	See Stoves, Ranges, &c.
Furniture Manufacturers.....	65, 67
Furriers and Fur Dealers.....	69
Gas-Fitters' and Plumbers' Supplies.....	See Lead Manufacturers. Also Machinery Dealers.
Gas Machines.....	69
Glass Manufacturers—Window and Bottles.....	69, 71
Grocers.....	71, 73
Guano, &c.....	See Fertilizers.
Guns, Pistols and Sporting Goods.....	73, 75
Hardware—Cabinet, General and Upholsterers'.....	75
Hardware—Saddlery.....	See Carriage Goods. Also Saddles, Harness, &c.
Harness Manufacturers.....	See Saddles, Harness, &c.
Hay, Feed, &c.....	77
Hide and Leather Dealers.....	77
Horse and Cattle Powders.....	79
Hotels.....	79
Hub Manufacturers.....	79
Insurance—Fire and Marine.....	81
Insurance—Life.....	81
Iron Founders.....	See Machinists.
Iron, Steel, &c.....	83
Iron Workers—Fence Railing, &c.....	85
Jewelers—Retail.....	87
Jewelers—Wholesale.....	87
Junk Dealers.....	See Paper Stock and Old Metals, &c.
Kerosene Oil.....	See Oil Dealers and Refiners.
Lard Refiners.....	See Provisions, &c.
Lead Manufacturers—Pipe and Sheet Lead.....	87
Leather, Hides, &c.....	See Hides, Leather, &c.
Lime, Hair, &c.....	89
Liquors and Wines.....	89
Machinery—Wood and Iron, &c.....	91
Machinists.....	91, 93, 95
Mantels, Tiles, &c.....	95
Marble and Stone Workers.....	97
Mattress Makers.....	See Curled Hair.
Medicinal Preparations.....	See Druggists.
Military and Society Goods.....	97
Mill Furnishings.....	97
Millwrights.....	99
Mouldings, &c.....	See Picture-Frame Manufacturers.
Notions and Fancy Goods.....	99

	PAGES.
Oil Dealers and Refiners	99, 101, 103
Opticians.....	103
Organs.....	See Piano Manufacturers.
Paint Manufacturers.....	103, 105
Paint Manufacturers—Roofing	105
Paints, Oil, Glass, &c.....	107, 109
Paper Bags, &c.....	109
Paper Hangings.....	111
Paper Manufacturers	111
Paper Stock, Old Metals, &c.	111, 113
Paper Warehouses.....	113
Piano Manufacturers.....	115
Picture-Frame Manufacturers	115
Plaster.....	See Cement, Plaster, &c.
Plumbers' and Gas-Fitters' Supplies. See Lead Manufacturers. Also Machinery.	
Printing Presses, &c.....	117
Produce Dealers	See Commission Merchants.
Provisions, &c.....	117
Refrigerator Manufacturers.....	119
Roofing Materials	See Coal-Tar Products. Also Paint—Roofing.
Rubber Goods.....	119
Rubber Stamps.....	See Engravers—Stencils, &c.
Saddles, Harness, &c.	119, 121
Salt	121
Sash, Doors and Blinds.....	See Building Materials.
Scales Manufacturers.....	121
Seeds	123
Sewing Machines.....	123
Shoe Findings.....	See E. Larrabee & Sons, under Hides, Leather Dealers.
Shot Manufacturers.....	125
Showcases.....	125
Snuff Manufacturers	125
Soap and Candle Manufacturers.....	127
Spices and Fancy Groceries	127
Sporting Goods, &c.....	See Guns, Pistols, &c.
Stationery, &c.....	129
Steam and Water Heating.....	See Machinery. Also Stoves, Ranges, &c.
Stencil Cutters.....	See Engravers—Dies, &c.
Stoves, Ranges, &c.....	129, 131
Tack Manufacturers.....	See Hardware.
Teas	133
Terra-Cotta Sewer Pipe, Fire Brick, &c.....	133
Tin Plate and Tin Materials.....	135
Tinware.....	135, 137
Tobacco, Cigars, &c.....	137
Toys, Baby Carriages, &c.....	139
Trunks, Satchels, &c.....	See Saddles, Harness, &c. Also Window Shades.
Twines.....	See Fishing Tackle, &c. Also Cotton Yarns, &c.
Umbrellas, Parasols, &c.....	139
Upholsterers—Fine Work.....	139
Upholstery Goods	139
Varnish Manufacturers.....	141
Vinegar.....	See Cider and Vinegar.
Water Works, Tanks, Pumps, &c.....	141
Wedding and Visiting Cards.....	141
Wheel Manufacturers.....	143
Whips and Umbrellas.....	143
Window Shades, &c.....	143
Wines and Liquors.....	See Liquors and Wines.
Wire Workers	145
Woodenware, &c.....	145
Wool Dealers.....	145

Index to Advertisers.

	PAGES.
Adelsberger, D. G.....	Water Works, Pumps, &c..... 140
Baker, R. J. & Co.....	Fertilizers..... 54, 138
Carrollton Hotel.....	18
Cassard, G. & Son.....	Lard Refiners, Meats, &c..... 136
Dushane, J. A. & Co.....	Paper Manufacturers..... 112, 142
Foutz, David E.....	Cattle Powders, Medicines, &c..... 48, 138
Frey, E. & S.....	Druggists, Vermifuge, Extracts, &c..... 46, 108
Friedenwald, Isaac.....	Printer, Bookbinder, &c..... 66
Gambrill, C. A., Mfg. Co.....	Flour..... 62, 136
Gilpin, Langdon & Co.....	Druggists..... 44, 114
Harvey, W. P. & Co.....	Meats, Lard, Cheese, &c..... 20, 134
Hirshberg, Hoilander & Co.....	Painters' and Artists' Supplies..... 106, 104
Hurt, J. B. & Co.....	Druggists, Medicinal Preparations.. 146
Kalling, Lewis.....	Americus Natural Mineral Water..... 50
Kemp, Clarence M.....	Gas Machine..... 70
Kohner, Max.....	Jewelry, Watches, &c..... 74
Lister Bros.....	Fertilizers..... 52, 134
Macneal, Jas. B. & Co.....	Oils and Roofing Paint..... 102
Markell Bros.....	Spices and Fancy Groceries..... 24, 144
Maryland Fertilizing & Mfg. Co.....	Fertilizers..... 56, 132
Mason, J. D. & Co.....	Cake and Cracker Bakery..... 22, 144
Myers, Jacob.....	Paper Hangings, &c..... 110
Red "C" Oil Mfg. Co.....	Oils..... 96, 132
Robinson, E. W.....	Roofing Paint..... 72
Robinson, Wm. C. & Son.....	Oils..... 98, 130
Sheppard, Isaac A. & Co.....	Stove Founders..... 128, 126
Simon, Charles & Sons.....	Dry Goods—Jobbing and Retail..... 78
Stevens, Geo. O.....	Sash, Doors, Blinds, &c..... 26, 142
Super & Wylie.....	Meats, Lard, &c..... 116
Swindell Bros.....	Window Glass and Bottles..... 68, 130
Tough, Rutherford & Co.....	Oils..... 100, 126
Walker, Noah & Co.....	Clothing—Retail..... 76
Williams, Z. F.....	Oils, Drugs, Paints, &c..... 64, 104, 108, 114

Index to Subjects and Illustrations.

Baltimore.....	12, 14, 16
Banking.....	82
Battle Monument.....	120
City Hall.....	118
Education and the Sciences.....	30, 32, 34, 36
Electoral Vote by States.....	80
Georgia.....	84
Maryland.....	86
Mother Earth and the Fertilizing Industries.....	38, 40, 42
North Carolina.....	88
Notable Events Happening First in Baltimore.....	28
Petroleum.....	58, 60
Population by States.....	80
South Carolina.....	90
United States.....	80
Virginia.....	92
Washington Monument.....	124
West Virginia.....	94
Young Men's Christian Association.....	122

THIS WORK IS NEITHER DEVOTED TO HISTORY NOR ART. IT FILLS MORE NEARLY THE AVERAGE BUSINESS WANT, AS A GUIDE TO BALTIMORE'S LEADING INDUSTRIES; AND WHILE A GOODLY NUMBER OF OUR PROMINENT FIRMS MAY NOT APPEAR, THOSE CONSTITUTING THIS BOOK WILL READILY BE RECOGNIZED, IN MANY CASES, AS NOT ONLY AMONG THE FIRST AND BEST IN THEIR LINES IN THIS CITY, BUT IN THIS COUNTRY.

ACKNOWLEDGMENT.

Like a good boy who, always in love with his mother and unceasing in his praises of her, so has Baltimore a son, in the person of my Lawyer-friend, HON. JOHN L. THOMAS, who is always ready to write, speak, sing or work, if the theme is Baltimore, her people, or her good. It is from this justly notable source that I get the article entitled "Baltimore," to which, with pleasure, I refer every holder or reader of this work.

Z. F. W.

BALTIMORE
MERCHANTS' AND MANUFACTURERS'
DIRECTORY.

AGRICULTURAL IMPLEMENTS.

BALTIMORE PLOW CO.

828 South Howard St.

PLOWS
And PLOW CASTINGS

ROLAND
FARM BELLS.

BICKFORD & HUFFMAN.

408 South Eutaw St.

MANUFACTURERS
FARMER FAVORITE
GRAIN DRILL,
WITH WIZARD, FAVORITE AND MARK'S
FERTILIZER ATTACHMENTS.

COTTINGHAM J. T. & CO.

124 Light Street.

MANUFACTURERS
FARMING IMPLEMENTS
AND MACHINES.
Seed Merchants and Importers.
Sinclair's Old Stand—Estab'd 100 yrs.

EMPIRE DRILL COMPANY.

706 Swan Street.

MANUFACTURERS
GRAIN DRILLS
—AND—
HAY RAKES.

BALTIMORE.

We have been requested to write a sketch of Baltimore City, as an introduction to this book; but Baltimore has been sketched so often, and by so many able pens, that we shrink from undertaking the task. Besides, the space allowed us is so small that we could not do the subject justice, and we propose, therefore, to call this a *glance* rather than a *sketch*.

We take it for granted the majority of readers of these pages will be more interested in knowing what Baltimore is than what it was. Very few care anything nowadays about how a city was planted, or who planted it, or through what struggles and vicissitudes it grew from a village to a town, and from a town to a city.

This being the case, we are saved the trouble of saying anything about the Joneses and Fells, and other celebrated characters, who are credited with having been the first to plant Baltimore where it is to-day, or of the many eventful episodes in its history. Suffice it to say, Baltimore was planted about one hundred and fifty years ago, and it has come to stay, as a great *manufacturing, commercial and trade* center.

Baltimore is the youngest of the great seaboard cities. It is younger than New York by one hundred and sixteen years; younger than Boston by one hundred years; younger than Philadelphia or Charleston by fifty years; and even younger than New Orleans, Richmond, or Norfolk.

If, during the comparatively short existence of Baltimore, it has grown so sturdy and wealthy and great as to become the rival of New York, Boston and Philadelphia, and these cities have become jealous because of its superior advantages as a great trade center, these facts ought to make Baltimoreans feel very happy and inspire them with new life and energy to go ahead and achieve yet greater things.

Whilst these great cities have been struggling for years to attract and absorb all of the trade, commerce and manufactures of the land, Baltimore has not attempted to exaggerate itself nor to belittle its rivals, but has been contented and happy in attending to its own affairs and in steadily and quietly developing the energies that have made it what it is to-day.

It may not be as frisky a little town as it was during the Revolutionary War, when it was the best known of any in the colonies, but it has lost none of the patriotism or courage it then possessed; and in spite of the efforts of its rivals to make it a "pent-up Utica," like Israel of old, it

McSHERRY D. E. & CO.

(D. R. WEAVER, GEN'L AGENT,)

211 S. Charles St. (Old No. 89).

McSHERRY GRAIN & FERTILIZER

***** **DRILLS** *****

GEM CITY DISC HARROW,
ANCHOR POTATO DIGGER,
CORN DRILLS, FEED CUTTERS, &C.

SINCLAIR R. & CO.

48 to 54 Hamburg St.

MANUFACTURERS

AGRICULTURAL IMPLEMENTS
AND **MACHINERY.**

ENSILAGE CUTTERS A SPECIALTY.

SEND FOR CATALOGUE.

THOMAS JOSHUA.

121 Light Street.

AGRICULTURAL

AND

MILL MACHINERY, &C.

WHITMAN E., SONS & CO.

27 East Pratt Street.

MANUFACTURERS

AGRICULTURAL

IMPLEMENTS.

ARTISTS' MATERIALS.

SEE ALSO PAINTS, ETC.

Hirshberg, Hollander & Co.

N.W. Cor. Hanover & Pratt Sts.

ARTISTS'

SUPPLIES

See pages 104 and 106.

See article on pages 12, 14 and 16.

has managed "to lengthen its cords, strengthen its stakes, and stretch out the curtains of its habitation."

The noble Chesapeake, the broad Patapsco, and the magnificent back country of rolling hills, fertile valleys, and ever-flowing and copious streams of sweet, pure water are advantages that God has given to Baltimore which no rivalry can ever take away from it, which made it what it is to-day, and will add to its population and wealth in all the years to come.

These are the jewels that blaze out in every direction; that long before the days of railroads made it attractive, not only as a home-place to live in, but as the most favorable for manufactures and commerce; and were Baltimore cut off to-day and made a mere "way-station," as some of its blustering rivals pretend it will be, its growth would not be retarded or its trade and manufactures affected.

The city that built the first railroad and electric telegraph in the country, and, in fact, started almost all enterprises of "pith and moment" within the last half century, is not the place to be a mere "way-station." The energy and pluck that nerved our fathers to scale the Alleghenies will be forthcoming to keep it where it is to-day, as *the natural seaport of the great West and Northwest and the distributing point for the products of the South.*

The Baltimore of to-day cherishes no resentments, jealousies or hates. The war left its commerce paralyzed and its manufactures prostrated. Since that unhappy period Baltimore has been working hard to make up for lost time, and it has more than recovered from the shocks of war.

Waste places have been built up, wharves and piers extended, the approaches to the harbor deepened and widened, immense elevators erected, the finest dry-dock in the country established, and machine shops, foundries and cotton mills occupy the most eligible sites on the streams in the city and its suburbs.

The growth of the city has been phenomenal, not only in the rapid building up of its geographical area, but in its great increase in population and manufactures. In fact, the city has overleaped its corporate limits, and if what properly belongs to it were added, which will be done next winter, Baltimore would stand third instead of sixth in point of population.

The rapid development of the productive industries has been no less phenomenal. Whilst it has temporarily lost its sugar refineries, which are again to be started on a larger scale than ever, it has more than made up for this loss in the establishment of thousands of new industries, embracing manufactories of iron, copper, leather, flour, tobacco, clothing, glassware, brick, tin-plate, oyster canning, fruit packing, etc., etc.

It now ranks eighth among the manufacturing cities of the country, and exemptions of the plant of the manufacturer from taxation, and the

LOANE J. W.

MANUFACTURER OF

FLAGS,
AWNINGS
AND TENTS.

15 N. Gay Street.

WISE JOHN H. & CO.

FLAGS, TENTS,
Plain and Fancy Awnings,

306 & 308 E. Pratt St.

HORSE AND WAGON COVERS.

BAG MANUFACTURERS.

BAILEY JOHN T. & CO.

MANUFACTURERS OF

Bags, Rope and Twines.

Old Corn Exchange Building.

IMPORTERS OF

BURLAPS and BAGGING.

GRAFFLIN JOHN C. & CO.

BALTIMORE BAG FACTORY.

SACKS AND BAGS

209, 211 & 213 South St.

OF EVERY DESCRIPTION.

BAKERS—STEAM.

BEATTY JAMES & CO.

CRACKER

AND CAKE

206, 208 & 210 Dugan's Wharf.

BAKERS.

abundant water-supply, that is sold at a nominal rate, will attract capital and every year add to its wealth.

As a home-place, a place to live in, Baltimore has no equal on this continent. We have travelled all over our country, have visited every city of any size from the Atlantic to the Pacific, and from Puget Sound and the Lakes to the Gulf of Mexico, and we can truthfully say there is no city in the land where a poor man can live so well and so cheaply, on a small income, and, if he be honest, be as much respected, as in Baltimore. The River and the Bay supply him with the finest fish, oysters and ducks to be found anywhere, while the fertile lands of the back country give him vegetables and fruits and all marketable commodities, the very best and of every variety. House rent is cheaper than elsewhere, and the houses of the laboring man are small-sized palaces compared with some we have noticed in other cities. Aside from its Johns Hopkins University and other colleges, no city in the land has finer or better educational institutions, free and open to the poor, and its homes, hospitals, asylums, free libraries and other institutions are too numerous to mention.

In addition to all this there is a strong moral tone pervading the whole community, noticeable to every stranger, and although Baltimore is called the City of Monuments, it is also the City of Churches and grand Christian enterprises. This moral tone is seen in the strict observance of the Sabbath day, in the general enforcement of the laws, the character and efficiency of its police, the high standing and attainments of its judges, and the honesty with which its municipal government is carried on.

In this rapid glance at Baltimore we have purposely avoided statistics and details: the reader must look elsewhere for these. But the best thing to do is to pay us a visit. Come, stranger; come; we will not "take you in," but take you by the hand of hospitality; and if you will come and see for yourself, you will say nothing has been exaggerated, but, on the contrary, half has not been told you. If you do not conclude to cast your lot with us when you come, we will bear no hard feelings against you on that account, but treat you kindly, and we are certain when you leave us you will ever after be a friend of Baltimore.

Chesapeake Steam Bakery.

(C. M. PALMER, MANAGER.)

17 W. Camden St.

E. L. PALMER & CO., PROPRIETORS.

FINE BISCUITS,
CRACKERS

—AND—

FANCY CAKES.

MASON JAMES D. & CO.

Pratt St., opp. Maltby House.

Maryland Steam Bakery.

CRACKERS

—AND—

FANCY CAKES.

See pages 22 and 144.

BANKERS AND BROKERS.

BROWN & LOWNDES.

Stock Exchange Building.

J. WILCOX BROWN, } All Members of the
C. D. LOWNDES, }
FRANK T. REDWOOD, } Baltimore Stock Exchange.

BANKERS AND BROKERS.

SPECIAL ATTENTION GIVEN TO

SOUTHERN SECURITY INVESTMENTS.

STEIN BROS.

32 E. Baltimore St.

BANKERS AND BROKERS.

Members of Balto. Stock Exchange.

*Receive Deposits from Bankers and Banks
and allow interest on balances.*

SOUTHERN SECURITIES AND INVESTMENTS
A SPECIALTY.

BANKS.

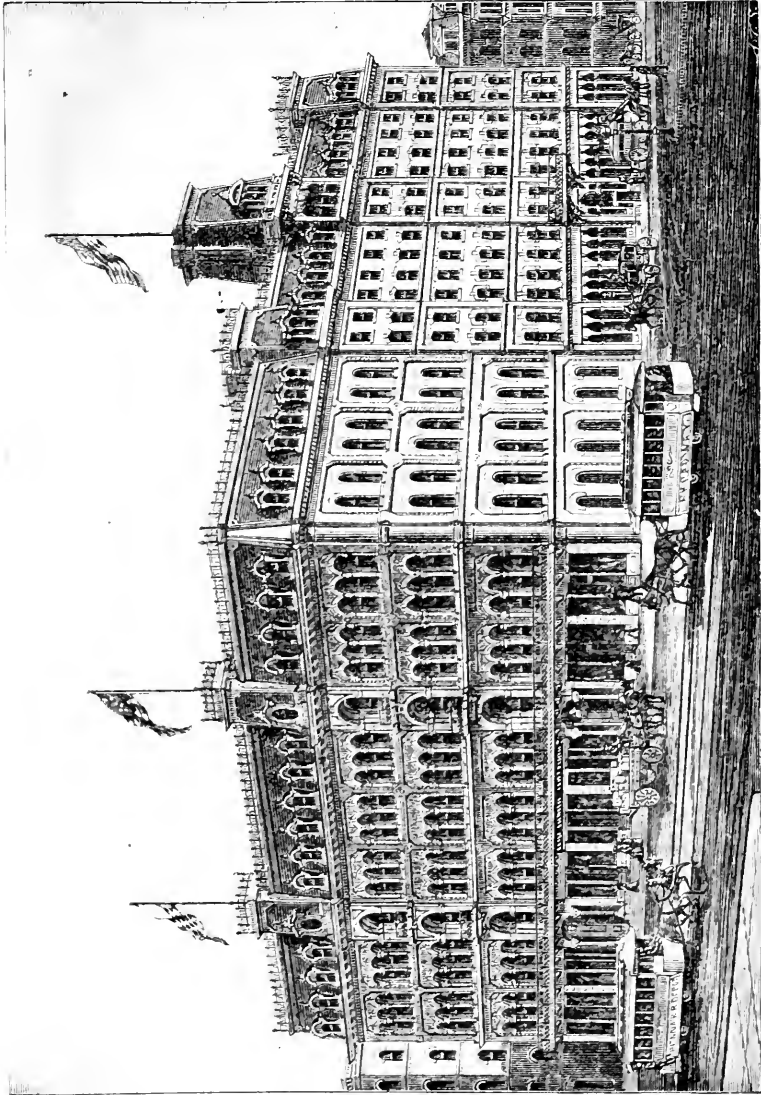
CITIZENS' NATIONAL.

HENRY JAMES, President.
THOMAS CASSARD, Vice-President.
J. WESLEY GUEST, Cashier.

Capital Stock, - \$500,000.00

Surplus, - - 445,433.53

CARROLLTON HOTEL, - - BALTIMORE.



This Hotel was built entirely new from the foundation. It has 250 chambers and every modern improvement, including large and commodious elevators.

It is pleasantly situated in the centre of the city and occupies an entire square, with an annex, which is bounded by Baltimore, Light, German and Grant Streets. The City Passenger Railway from all points pass the door, or within a few steps of it, a convenience that can scarcely be estimated. The rates are for—First and Second Floors, \$4 per day; Third and Fourth Floors, \$3 per day; Fifth and Sixth Floors, \$2.50 per day. Bath Rooms and Parlors at reasonable extra rates.

J. P. SHANNON, Manager.

Farmers' & Merchants' Nat.

Established 1808.

Capital, . . . \$650,000

Surplus, . . . 325,000

JAMES SLOAN, JR., President.

C. H. PIRTS, Cashier.

Accounts solicited.

Collections promptly attended to.

FRANKLIN BANK.

Capital, . . . \$320,000

Surplus, . . . 45,000

CHARLES J. BAKER, President.

V. EMORY GARDNER, Cashier.

Accounts solicited.

HOWARD BANK.

Capital, . . . \$206,890

Surplus, . . . 25,000

SAM'L EDMONDS, President.

THOS. S. RIDGAWAY, Cashier.

A general Banking Business transacted
and Collections made.**MERCHANTS' NATIONAL.**

Capital, . . . \$1,500,000

DOUGLAS H. THOMAS, President.

EDWARD H. THOMSON, Cashier.

Undivided Profits, 550,000

NATIONAL MECHANICS'.

Established 1806.

Capital, . . . \$1,000,000

Surplus, . . . 140,000

JNO. B. RAMSAY, President.

JAMES SCOTT, Cashier.

Collections made on all points in the
United States and Canada.**OLD TOWN BANK.**

Capital, . . . \$150,000

Surplus, . . . 60,000

E. G. HIPSLEY, President.

THEO. F. WILCOX, Cashier.

Special attention to private accounts.

PEOPLE'S BANK.

Chartered 1856.

Capital paid up, . \$250,000

Surplus and undi-
vided profits, . . 29,000

WM. S. CARROLL, President.

J. HENRY JUDIK, Vice-President.

JOS. A. MCKELLIP, Cashier.

A general Banking Business transacted.

WM. P. HARVEY & CO.
GRAIN and PROVISIONS,
CHICAGO, ILL.

WM. P. HARVEY & CO.
GRAIN and PROVISIONS,
KANSAS CITY, MO.

W. P. HARVEY & CO.

Office, 311 EXCHANGE PLACE.

PACKING HOUSE and LARD REFINERY, 302, 304 and 306 PLEASANT
and 353 NORTH STS.
COLD STORAGE WAREHOUSES, 344, 346 and 348
HOLLIDAY STREET.
FISH DEPARTMENT, 108 COMMERCE STREET,
BALTIMORE, MD.

Commission Merchants

AND DEALERS IN

SMOKED AND DRY SALTED MEATS.

CLEAR RIB SIDES, LONG CLEAR SIDES,
SHOULDERS, Etc.

MESS PORK AND FAMILY BEEF,

Sugar-Cured Meats,

Hams, Shoulders, Breakfast Bacon Strips, Breasts, Beef, Etc.

CANVASED HAMS—" SPRINGFIELDS," "MONUMENTALS,"
"PINEAPPLES."

BEST REFINED PURE LEAF LARD,

IN ALL STYLE PACKAGES,

TIERCES, TUBS, 50-LB. TINS, 20-LB. BUCKETS, 3, 5 and 10-LB.
TINS, PACKED IN CASES.

TARBELL'S CELEBRATED CREAM CHEESE,

The finest made. Beware of imitations, as several disreputable parties
have endeavored to imitate this brand.

DERBY CREAM CHEESE,

AND OTHER FAVORITE STYLES; ALSO

CHOICE CREAMERY AND DAIRY BUTTER.

SALT FISH of all kinds.

Barrels, Halves, Quarters, Kits, Pails, Etc.

MACKEREL, HERRING, COD, HAKE, BONELESS COD, Etc.

SECOND NATIONAL. Capital, . . . \$500,000.00

J. S. GILMAN, President.

C. C. HOMER, Vice-President.

J. H. BAWDEN, Cashier.

Surplus, . . . 250,000 00

THIRD NATIONAL.

ESTABLISHED 1865.

WM. H. CRAWFORD, President.

J. FRANKLIN DIX, Vice-President.

ALEX. M. CARTER, Cashier.

CAPITAL, \$500,000.00

SURPLUS, 65,400.00

Will collect and remit promptly
at low rates.

WESTERN NATIONAL.

J. G. HARVEY, President.

W. F. BURNS, Vice-President.

W. H. NORRIS, Cashier.

CAPITAL, \$500,000.00

SURPLUS, 250,000.00

Collections made on all accessible
points, at moderate rates.

BARREL DEALERS AND COOPERS.

GILPIN J. W. & SONS.

725 to 729 Fort Ave.

SOUTH BALTIMORE COOPERAGE.

EMPTY BARRELS AND CASKS

Of Every Description

BOUGHT AND SOLD.

Orders promptly attended to and consignments
solicited.

GROPP GEORGE.

204 N. Schroeder St.

BARREL DEALER

—AND COOPER

NEW AND SECOND-HAND

—BARRELS.—

SCHLIMME F.

624 & 626 Portland St.

DEALER IN

Oil, Whiskey and Second-Hand Barrels

—IN GENERAL—

Also Manufacturer of all Kinds of

OIL BARRELS, LARGE CASKS AND KEGS.

Correspondence Solicited.

Maryland Steam Bakery.

ESTABLISHED 1820.

JAMES D. MASON & CO.

SUPERIOR

BISCUITS, CRACKERS,

AND

Fancy Cakes,

PRATT ST., opposite Maltby House,

BALTIMORE.

CORRESPONDENCE SOLICITED.

*PRICE LISTS OF OVER 200 VARIETIES FURNISHED
ON APPLICATION.*

See page 144.

CHESAPEAKE BELTING CO.

MANUFACTURERS OF

Canvas Belting.

Baltimore, Md., U. S. A.

See article on pages 12, 14 and 16.

BOILER MAKERS.

SEE ALSO MACHINISTS.

COLEMAN JNO. T. & SONS.

STEAM BOILER WORKS,

MANUFACTURERS OF ALL KINDS OF

STEEL AND IRON STEAM BOILERS,

SMOKE STACKS,

WATER TANKS, LARD KETTLES,

OIL STILLs, Etc.

Cor. Holliday & Pleasant Sts.

POOLE & HUNT.

MANUFACTURERS

BOILERS

—AND—

Office, 233 E. German St.

STEAM ENGINES

BOOTS AND SHOES.

BANGS, BARD & CO.

MANUFACTURERS AND JOBBERS

—OF—

BOOTS

—AND—

38 W. Baltimore St.

SHOES.

Paca Steam Mustard and Spice Mills. ❁

ESTABLISHED 1812.

❁ ❁ ❁ MARKELL & BROS.

SUCCESSORS OF
CHAS. MARKELL & SONS.

IMPORTERS
AND
MANUFACTURERS

OF

SPICES

AND JOBBERS IN

FANCY & GROCERIES, ❁ ❁ ❁ ❁

Nos. 3 & 5 E. LOMBARD STREET,

BALTIMORE, MD.

Mustard and Pure Ground Spices

A SPECIALTY.

See page 144.

CREIGHTON, DISNEY & CO.

SUCCESSORS TO
HURST, MILLER & CO.

BOOTS AND SHOES

Cor. Hopkins Pl. and German St.

WHOLESALE.

YOUNG, KIMMELL & DIGGS

WHOLESALE

Boots and Shoes.

303 W. Baltimore St.

HAND WORK A SPECIALTY.

BOTTLERS.

KALLING LEWIS.

BOTTLER OF
LAGER BEER,
SODA WATER,
AMERICANUS Natural Mineral Water, etc.
See page 50.

Cor. South & Water Sts.

**Brass Goods, Sheet Brass, Tubing,
Wire, Etc.**

VOGEL PHILIP R., JR. Sheet Brass,

105 W. German St.

Tubing, Wire, Etc.

See article on page 28.

ESTABLISHED 1855.

GEORGE O. STEVENS,

Manufacturer and Dealer in

Doors, Sash *and* Blinds,

FRAMES,

Mouldings, Brackets, Mantels, Etc.

115 and 117 LIGHT ST., near Pratt,

BALTIMORE.

Stair Work, Church Work, Pews, Etc.

STAINED AND FANCY GLASS.

REGAL MIXED PAINTS.

HARD WOOD MANTELS AND DOORS.

Send for Catalogue and Quotations.

CROWN BRUSH WORKS,

118 Hanover Street.

WM. A. TOTTLE & CO.
 PROPRIETORS.

→*BRUSHES*←

OF EVERY DESCRIPTION

Manufactured for the Trade.

BUILDING MATERIALS.

STEVENS GEO. O. Sash, Doors, Blinds,
 FRAMES,

MOULDINGS, MANTELS, ETC.

115 & 117 Light St.

See pages 26 and 142.

STORCK A. & SONS.

557 & 559 E. Monument St.

—AND—

1066 N. Front Street.

LUMBER,**Sash, Doors, Blinds, Etc.**

HUBS A SPECIALTY.

THOMAS JOS. & SON.

OFFICE AND FACTORY,

818 to 832 Leadenhall St.

BUILDING MATERIALS.
 HARDWOOD MANTELS,
 HARDWOOD DOORS,
 TRIMMINGS, &c.
 HARDWOOD LUMBER.

Watkins Frank D. & CO.

Cor. Pratt & Pattison Sts.

SASH,

DOORS,

BLINDS, &c.

 See article on MOTHER EARTH, pages 38, 40 and 42.

NOTABLE EVENTS HAPPENING FIRST IN BALTIMORE.

- 1771—The first Wheat shipped to Europe.
1774—The first established (present) Post-office System.
1783—The first Mud Machine.
1784—The first M. E. Church in the United States.
1785—The first Agricultural Society.
1785—The first China Goods imported.
1787—The first Sunday School in the United States.
1789—The first Steam Saw-Mill.
1789—The first Council of Catholic Clergy.
1790—The first Wall Paper introduced.
1792—The first Water Company in the United States.
1796—The first Turnpike Road in the United States.
1808—The first Horse Artillery.
1809—The first American Sisters of Charity.
1813—The first Marine Artillery.
1814—The first Monument to George Washington.
1816—The first Gaslight Company.
1819—The first Agricultural Newspaper in the United States.
1819—The first Sunday-School Newspaper in the United States.
1819—The first Odd-Fellows' Society.
1827—The first Railroad (Baltimore & Ohio) in the United States.
1828—The first Founding of the M. P. Church.
1832—The first city to import Guano.
1839—The first Dental College in the world.
1840—The first Temperance Society.
1844—The first Telegraph Line.
1858—The first Paid Fire Department.
1861—The first Bloodshed in the late Civil War.
1865—The first Southern Agricultural Aid Society.
1866—The first Southern Relief Association.

Also the birthplace of other important events.

IMWOLD & MEHRING.

CARPETINGS

224 & 226 W. Balto. St., cor. Howard.

McDOWELL & CO.

IMPORTERS
CARPETS,
OIL CLOTHS,
MATTINGS, &c.

36 W. Baltimore St.

TURNBULL JOHN Jr. & CO.

CARPETING.

20 W. Baltimore St.

CARRIAGE GOODS, HARDWARE, &c.

SEE ALSO HUB MANUFACTURERS; ALSO WHEEL MANUFACTURERS.

DURR & RING.

SUCCESSORS TO
ALLEN PAINE & SON,
CARRIAGE GOODS
IRON AND STEEL.

6 S. Liberty St. (Old No. 2).

HUTTON GEO. H. & CO.

PATENT
Jump Seat Irons
AND
SPECIALTIES IN CARRIAGE HARDWARE.

Cor. Harford & Central Aves.

JENKINS EDW. & SONS.

IMPORTERS OF
CARRIAGE & SADDLERY
HARDWARE.

21 Hanover Street.

EDUCATION AND THE SCIENCES.

In any account of the literary and educational facilities of Baltimore, it is but natural to begin with the Johns Hopkins University, not only because its influence is wider than that of those institutions of a more distinctly local character, but because the munificence of its foundation, and certain novelties in its scope and methods, have attracted very general attention both at home and abroad. It has, as a college and university, no exact counterpart anywhere.

In 1873 Mr. Johns Hopkins, a wealthy merchant of Baltimore, left the bulk of his large fortune of between six and seven millions of dollars to found a university and a hospital. For the organization and administration of the University the founder appointed a board of twelve trustees, selected for especial fitness for the responsible trust. These gentlemen, after carefully considering the purposes of the testator and the needs of the community, and after the examination of the chief university systems in Europe and the United States, fixed upon a general design, which seemed to combine the greatest advantages and to be, at the same time, elastic enough to admit of such modifications as experience should show to be desirable.

As now constituted, the Johns Hopkins University consists of a collegiate department and a university proper, the one leading to the other. The academic staff at present consists of forty-eight members, including the president, professors of several grades, assistants and instructors. The students number, in 1886-7, 375.

The geographical distribution of the students shows how widely the reputation of the University has spread, although it has been in operation only eleven years. Of the 924 students enrolled in the ten years 1876-86, 419 came from Maryland (Baltimore furnishing 330), while 505 came from other States, from Canada, Europe and Japan.

The buildings of the University are situated in a central and attractive part of the city. They consist at present of five large and substantial structures, or halls. There is also a large and excellently appointed gymnasium, fitted out on the Sargent system, and under the control of a properly qualified instructor. These buildings have all been paid for out of the revenues of the University, the capital endowment being preserved intact.

NORRIS, VEY & CO. CARRIAGE GOODS

24 S. Calvert Street.

IN ALL DEPARTMENTS.

CEMENT, PLASTER, ETC.

SEE ALSO LIME, HAIR, ETC

JOHN BULLOCK & SON.

(ESTABLISHED 1839.)

71 Smith's Wharf.

Importers' and Manufacturers' Agents
for the best brands

PORTLAND } CEMENTS
AND DOMESTIC }

LAND } PLASTER
AND CALCINED }

Clarke Wm. Wirt & Son.

115 South Gay St.

IMPORTERS AND DEALERS

PLASTER

AND

CEMENTS.

FERTILIZERS.

CLASSEN H. W. & CO.

515 to 521 S. Howard St.

CEMENTS

LIME, HAIR, SEWER PIPE,

FIRE BRICK, ETC.

Building and Pressed Brick.

RUSSELL, GIESE & CO.

18, 19, 20 & 21 Spear's Wharf.

IMPORTERS

PORTLAND CEMENT

Rosendale Cement,

CALCINED PLASTER.

Plasterers' Hair, Etc.

The University also possesses "Clifton," the beautiful and extensive country-seat of Mr. Hopkins, on the northeastern outskirts of the city, to which the students have free access, and where provision has been made for athletic sports of various kinds.

The library contains 30,000 volumes, and over 800 distinct periodicals are received, partly by subscription and partly by exchange, from all parts of the globe. In addition, the members can avail themselves of the rich stores of the neighboring Peabody Library, amounting to more than 86,000 volumes.

Seven journals are published under the auspices of the University, representing as many leading branches of study and research, and numbering among their contributors eminent men of science on both sides of the Atlantic.

THE JOHNS HOPKINS HOSPITAL,

as above mentioned, was founded by Johns Hopkins at the same time as the University, and endowed with the same amount, about \$3,000,000. Thirteen commodious buildings, connected by covered passages, have been constructed and are nearly ready to be occupied. This remarkable group of edifices stands upon high ground, in the eastern part of Baltimore, about a mile from the Monument, and will well repay a visit.

Next among the institutions of Baltimore intended to increase the knowledge and educate the taste of the public is

THE PEABODY INSTITUTE,

one of the many gifts of another of America's great philanthropists, George Peabody. During all his residence in foreign lands Mr. Peabody never forgot Baltimore, the city where he had met his first business success; and, in 1857, he gave it a substantial proof of his gratitude by founding the Peabody Institute and appointing twenty-five prominent Baltimoreans as trustees, placing in their hands, in several gifts, a total endowment of \$1,400,000. The result of this liberality was the present handsome building of white marble standing on Washington Square.

A *Library*, first opened to the public in October, 1856, with a nucleus of 50,000 volumes, has been slowly increased, with judicious selection, till the number now reaches 86,000 volumes. The books are of a character to supply the needs of special students and teachers, as well as of the general public.

An annual course of *Lectures* on popular subjects was provided for, and distinguished lecturers, both American and European, are engaged to present the results of their studies and investigations.

A *Conservatory of Music* was organized for the teaching of music, and an annual series of *Symphony Concerts* is provided for.

BAYLEY R. P. & CO.

IMPORTERS OF

CROCKERY, CHINA,

27 Hanover Street.

Glassware, &c.

Chandlee, Quarles & Co.Glassware,Queenware.

Cor. Lombard & Hanover Sts.

NEWBOLD & SONS.

Glassware

—AND—

Lamp Goods.

116 Hanover Street.

Agents for Queensware
Factories.**CIDER AND VINEGAR.****EHLEN & CO.**

C I D E R

AND

V I N E G A R .

21 East Lombard Street.

ELMER LEWIS & SONS.

MANUFACTURERS

WHITE WINE AND CIDER VINEGAR.

(ESTABLISHED 1858.)

SWEET AND CHAMPAGNE CIDER.

No. 117 South Street.

Royal + Buckingham + Table + Sauce.

Lastly we must mention a *Gallery of Art*, which has been enriched by several gifts from liberal citizens.

THE MARYLAND INSTITUTE

dates, in its present form, from 1848, and is the outgrowth of a similar organization which was incorporated as early as 1825. Its prominent feature is a *School of Design*, first opened in 1851, including a night school, of which the membership is very large, and a day school, with a smaller membership. The *Library* of the institution numbers about 20,000 volumes. A course of *Lectures* is annually given to the members, and is always well attended. A *Music School* is also attached to the Institute.

By an act of corporation of the year 1798 was formed the "Medical and Chirurgical Faculty of Baltimore," with the power of granting licenses to those qualified to practise medicine and surgery within the State; and, by another act of 1812, the faculty was authorized to "constitute, appoint and annex to itself" three other faculties—viz.: of Divinity, of Law, and of Arts and Sciences. This it did on the 6th of January, 1813, and so was formed

THE UNIVERSITY OF MARYLAND,

which is the next institution that we shall briefly describe. The *School of Law* was reorganized in 1870 by the active efforts of some of the leading members of the Baltimore bar, and since then has advanced with a steady and satisfactory progress, giving the degree of Bachelor of Laws to a larger number of applicants each year.

The *School of Medicine* has continuously kept up its organization as an active-working institution, from its incorporation to the present time, being one of the oldest schools in the country. Under its management are the Baltimore Infirmary or University Hospital, the Marine Hospital of the port, and the Maryland Free Dispensary. The students are assigned wards in the Hospital, and, while in attendance on the sick, they receive daily supervision and instruction from the professors of the University.

Among the institutions in Baltimore for the study of the science of medicine may be mentioned

THE COLLEGE OF PHYSICIANS AND SURGEONS,

where clinical and didactic instruction are so combined as to give all students an eminently practical course of study. The students are granted equal privileges with those of other institutions in all the hospitals and public charities of the city, and the College has connected exclusively with itself two notable organizations—viz.: the *Baltimore*

BALTIMORE CLOCK CO.

REPRESENTING ONLY

FIRST-CLASS

Charles & German Sts.

MANUFACTURERS.

CLOTHING—RETAIL.
ACME HALL.

FINEST

5 and 7 W. Baltimore St.
(NEAR CHARLES ST.)

◀ CLOTHING ▶

OEHM C. N. & SON. CLOTHING.

Pratt & Hanover Sts.

WRITE FOR SAMPLES.

OEHM C. N. & SON.

MANUFACTURERS AND JOBBERS

—H.O.F.—

Pratt & Hanover Sts.

CLOTHING.**WALKER NOAH & CO.,**

CLOTHING

For Men, for Boys, for All.

CLOTHING

For Summer, for Winter, for Fall.

119 & 121 E. Baltimore St.

SEE PAGE 76

City Hospital, where many patients are treated almost daily, and the *Maryland Lying-in Asylum*, where superior clinical advantages are offered for the study of obstetrics.

THE BALTIMORE COLLEGE OF DENTAL SURGERY,

chartered in 1839, is the oldest, and was for many years the only dental college in the world. It contains an *Infirmiry* and a *Museum*.

THE MARYLAND DENTAL COLLEGE

gives courses of lectures in the science of dentistry, both didactic and clinical, and contains an *Infirmiry*, open throughout the entire year, for the treatment of patients and for the instruction of students.

Returning to institutions of a more general character, we will speak of

THE MARYLAND ACADEMY OF SCIENCES,

incorporated in 1867, whose principal object is to form a *Museum* of the natural history of Maryland, containing specimens of all the animal life of the State. This it has to a great degree accomplished, and its interesting museum is open to the public daily. It also contains a reference library of over 1000 volumes, and its members often give public lectures on subjects connected with the object of the institution.

The *Schools* of Baltimore, both public and private, are among the best in the country. Among the former may be mentioned the *State Normal School*, for the education of persons intending to become teachers within the State limits; the *Baltimore City College*; the *Eastern* and the *Western Female High Schools*, and a complete system of *Public Schools*, both Grammar and Primary Schools.

Finally, we may complete the summary of the literary and educational facilities of Baltimore by a mention of the *Maryland Historical Society Library*, which, by becoming the heir of the old Baltimore Library Company, and by means of a gift of \$20,000 from George Peabody, became possessed of a magnificent collection of books on the history of the State and kindred topics; and of the *Enoch Pratt Free Circulating Library*, which was endowed by the munificent gift of Enoch Pratt, one of Baltimore's most respected citizens, in 1885, with considerably over a million dollars, and already has on its register more than 26,000 names, from all classes of the public.

Baltimore also supports an *Oratorio Society*, and this year has been inaugurated a course of *Philharmonic Concerts*, which are largely patronized by lovers of music in the city; besides several private musical associations, like the *Baltimore Glee Club*, and others.

Balto. Coal Tar & Mfg. Co.

◀ROOFING▶

Roofing Materials

16 W. Camden St.

DISINFECTANTS.

COFFEE—ROASTED.

LEVERING E. & CO. ROASTED

COFFEE.

102 Commerce St.

E. L. C. Brand—1 lb. Packages.

COMMISSION MERCHANTS,

GENERAL AND SPECIAL.

BARTLESON & AMBLER.

General Commission Merchants.

Wool, Hides, Furs.

416 W. Franklin Street.

POULTRY, BUTTER, EGGS, &c.

BELL J. E. & CO.

SOLICIT

◀CONSIGNMENTS▶

OF ALL

205 & 207 Bowly's Wharf.

SOUTHERN PRODUCE.

BOSEE, MEDAIRY & CO.

BUTTER,

CHEESE,

EGGS,

—AND—

105 South Street.

GENERAL COMMISSION MERCHANTS.

MOTHER EARTH AND THE FERTILIZER INDUSTRIES.

The progress of civilization is marked not only by the wider diffusion of knowledge, but first and foremost by the practical application of scientific discoveries. This truism is in a singular manner illustrated by an industry which, though only fifty years old, has contributed more towards increased general prosperity than all others. As long as the earth furnishes nutriment to man, agriculture will remain the most widespread and, at the same time, the most essential occupation of man, so that agricultural progress and agricultural prosperity are the true measure of a nation's advance.

As soon as the laws which underlie the transformation of matter from earth into grass and cereals, from that into milk and bread and bone and meat and blood, and back again into earth, became properly known, the science of chemistry pointed out how the phosphate deposits and waste products of slaughter-houses, and other refuse, were valuable means of restoring to wornout soils previous fertility. On the hand of scientific research the preparation of artificial plant-food began, and soon rose from insignificant beginnings into a most important branch of industry in all civilized countries. Nor did the United States remain behind the Old World in this respect. To state that the total amount of commercial fertilizers consumed in the United States rose from 100,000 tons in 1875 to 1,000,000 tons in 1885, is to state what rapid strides the fertilizer industry has made within that short period of ten years.

While factories equipped with costly machinery and every known appliance for economical production are scattered all along the Atlantic seaboard, Baltimore has from the beginning occupied the foremost place, as manufacturing nearly 33 per cent. of the total output of the whole country. Twenty-seven factories are located in and around Baltimore, nearly all supplied with acid chambers of their own, and an aggregate capacity of about 300,000 tons. Charleston ranks next, with eight good-sized establishments. Several very large factories are located in the New England States, and New York, Philadelphia, the two Wilmingtons, Richmond, Savannah, Augusta and Atlanta possess also their share of this industry.

To what extent fertilizers were the means of restoring new prosperity to the South has never been properly investigated, but a superficial glance at the size of the cotton and tobacco crops of the last few years convinces us that the increased production per acre is directly traceable

BUZBY D. T. & CO.

Cheese—Wholesale.

Manufacturers' Agents for Reliable Brands
of Factory, Pineapple, Edam,
YOUNG AMERICA AND ENGLISH DAIRY CHEESE.

6 Exchange Place.

Large Stocks. Lowest Possible Prices.

BUZBY D. T. & CO.

Manufacturers' Agents for
Proctor & Gamble's (Cincinnati) Soaps and Candles.

T. EINGSFORD & SON'S (OSWEGO) STARCH.

Geo. C. Napheys & Son's (Phila.) Pure Leaf
Lard.

R. Johnson & Son's (Madison) Starch.
American Glucose Co.'s (Buffalo) Glucose
and Grape Sugars.

6 Exchange Place.

CARROLL WM. J. & CO.

GENERAL COMMISSION MERCHANTS,
And Manufacturers' Agents for

FISH OIL

DRY AND WET

FISH SCRAP.

123 S. Calvert St. and 122 Cheapside.

CHIPCHASE BROTHERS.

ESTABLISHED 1875.

WOOL

SACKS FURNISHED.

224 South Charles St.

CHIPCHASE BROTHERS.

ESTABLISHED 1875.

HIDES, FURS,

GREEN AND DRIED FRUITS,

—AND—
PRODUCE GENERALLY.

224 S. Charles St.

JEROME JAS. W. & CO.

COMMISSION MERCHANTS.

WOOL, HIDES,

Poultry, Eggs, Green and Dried Fruits,

SOUTHERN VEGETABLES, ETC.

20 E. Camden St.

EVANS THOS. H. & CO.

PRODUCE COMMISSION MERCHANTS.

Special attention to the sale of

Southern Fruits and Vegetables.

214 Light-Street Wharf.

SEED POTATOES A SPECIALTY.

and proportioned to the quantities of fertilizers consumed. It is safe to say that but for unwise legislative enactments which threw unnecessary embargoes around the trade, the agricultural progress would have been greater. The fertilizer industry, depending as it does upon agricultural chemistry, has at no time been averse to proper legislation; that is to say, to a proper inspection, by means of which farmer and manufacturer are alike protected against imposition on one hand and competition with adulterated goods on the other hand. Unfortunately, many State laws have been framed for revenue purposes rather than the legitimate object they should have held in view, and so an endless variety of provisions has, in course of time, been enacted which hamper the trade, obstruct its healthy expansion, and tax the farmer by taxing the manufacturer. Gradually these mistakes are discovered as such, and, through the harmonious co-operation of chemists, agricultural departments and the trade, an improved state of things may be looked forward to at no distant date. This is all the more to be hoped, as the necessity for the use of fertilizers is no longer a debatable question. That it pays to feed the soil is a fact established beyond dispute. Competition has, moreover, brought the prices down to figures which enable the poorest farmer to make profitable investments in this indispensable agricultural commodity.

As regards fertilizers themselves, they divide themselves into two classes: *complete fertilizers*—viz.: artificial products containing, in due proportions, the three most essential elements of plant-food in available form; namely, phosphoric acid, nitrogen and potash—and, secondly, *acid phosphates*, containing only phosphoric acid, or phosphoric acid and potash combined, but no nitrogen. The manufacture of complete fertilizers is more extensively carried on in Baltimore and the North than in the South, which is the *entrepot* of acid phosphate manufacture.

Though the use of fertilizers was at first confined to the tier of States first settled, the West feels already the necessity of restoring to its rich soil its primitive producing capacity by means of fertilizers, and hence some factories have already sprung up in the interior.

The terse maxim that the most profitable cultivation of land consists in making two blades of grass grow where one would grow did nature remain unassisted, underlies what is called "high farming." Without artificial fertilizers, increased productiveness per acre remains an utopian dream; by their proper application, however, results have been obtained which speak for themselves, for, to raise an average acreage yield of from fifteen to eighteen bushels of wheat to upwards of thirty, and in some instances as high as sixty bushels per acre, shows at once what saving in labor on one hand, and what increased return on the other, intelligent fertilization may produce. From whichever point of view the fertilizer trade is looked at, the interdependence of agricultural

HIGGINS & WATERS.

GENERAL & COMMISSION MERCHANTS.

SPECIAL ATTENTION TO

WOOL, HIDES, FURS,

18 W. Baltimore St. (Old No. 246).

Ginseng, Wax, all Botanicals, and General Produce

Lawder Sam'l M. & Son.

COMMISSION MERCHANTS.

HIDES, + FURS, + WOOL

AND

DRIED FRUITS, &c.

206 S. Charles Street.

NORRIS W. E. & CO.

ESTABLISHED 1855.

PRODUCE • COMMISSION • MERCHANTS.

SPECIALTIES:

400 S. Eutaw St. (Old No. 114).

Ginseng, Wool, Dried Fruits, Roots, &c.

STRAUS JOSEPH H.

RECEIVER AND DEALER

IN

HIDES AND FURS.

516 Light-St. Wharf.

☞ Highest Prices and Prompt Returns.

WINPENNY T. H. & CO.

Established 1880.

COMMISSION & MERCHANTS

FOR SALE OF

324 Light-St. Wharf.

Fruits, Live Stock, Hides, Furs, Wool,

POULTRY, EGGS AND PRODUCE GENERALLY.

CONFECTIONERY, &c.

CLARKE & JONES.

MANUFACTURERS OF

PURE & CANDY

AND DEALERS IN

17 Light Street.

FOREIGN FRUITS, NUTS, &c.

prosperity and the manufacture of scientifically prepared manures asserts itself everywhere, and the time will come when this industry will play the most important part in the economic administration of national wealth.

The above subject is of such vast importance to both grower and consumer, to the modern planter as well as the young agricultural student—indeed, is one which cannot fail to interest all intelligent classes, and which will grow in interest each year as we become more familiar with fertilizers, their need and uses. In this anticipation, I can but earnestly recommend all business men and students to read carefully the above article, kindly supplied by A. de Ghequier, Esq., of Baltimore, who is not only our recognized authority on the subject, but is recognized as authority throughout the United States and many parts of Europe.

INTERESTING ARTICLES.

	PAGE.
Baltimore.....	12, 14 and 16
Notable Events.....	28
Education and the Sciences.....	30, 32, 34 and 36
Petroleum.....	58 and 60

BARNES & CO.

Manufacturers and Wholesale Dealers in

MACHINE-CUT CORKS.

127 & 129 East Falls Avenue.

*Bottlers' and Brewers' Supplies.***PACKHAM, De WITT & CO.**

Manufacturers and Dealers in

CORKS,

6 S. Howard Street.

BUNGS, &c.**COTTON YARNS, TWINES, &c.****BALDWIN & CUGLE.****COMMISSION MERCHANTS.****COTTON YARNS, ROPE, TWINES,**

Carpet Warps, Bags, Wicks,

107 W. German Street.

*BATS, PLAIDS, COMFORTERS, &c.***CURLED HAIR, &c.****WALPERT FRED. & CO.****CURLED HAIR,****MATTRESSES****AND BEDDING**

104 & 106 N. Gay St.

OF ALL DESCRIPTIONS

GILPIN, LANGDON & Co.

(SUCCESSORS TO CANBY, GILPIN & CO.)

BERNARD GILPIN.
THOMAS P. LANGDON.
HENRY B. GILPIN.

Importers and Jobbers of

DRUGS,

N. W. Cor. Light & Lombard Sts.

BALTIMORE, MD.

New York Office, Cor. Cedar & Pearl Sts

(See page 114)

BAILY JAS. & SON.

34 E. Pratt St.

IMPORTING AND JOBBING
DRUGGISTS.

PAINTS A SPECIALTY.
Special attention to Country Store orders.
Correspondence solicited.

BOYKIN, CARMER & CO.

11 & 13 N. Liberty St.

WHOLESALE DRUGGISTS,
AND DEALERS IN
AGRICULTURAL
CHEMICALS.

BROWN WM. H. & BRO.

31 Hopkins Place.

IMPORTERS,
— **WHOLESALE DRUGGISTS** —
And Manufacturers of Fine
PERFUMES.

ENGLAR, KITE & CO.

Cor. Howard and Lombard Sts.

IMPORTERS
And Wholesale Dealers in
FOREIGN AND DOMESTIC DRUGS.
Druggists' Sundries and Fancy Goods
a Specialty.

FREY E. & S.

(Chas. W. Logan, Proprietor.)

314 W. Baltimore St.

1893-1897.
WHOLESALE DRUGGISTS.
PROPRIETORS
FREY'S VERMIFUGE and C. W. LOGAN'S
BLOOD PURIFYING TONIC.
See pages 46 and 108.

GILPIN, LANGDON & CO.

N. W. Cor. Light & Lombard Sts.

IMPORT AND EXPORT
— **DRUGGISTS** —
AND
JOBBER.
See pages 44 and 114.

HURTT JOHN B. & CO.

73 W. Baltimore St., near Gay.

DRUGGISTS.
—
MEDICINAL PREPARATIONS.

See page 146.

CHAS. W. LOGAN.

ESTABLISHED 1833.

E. & S. FREY,
Wholesale × Druggists,

314 WEST BALTIMORE STREET,
BALTIMORE, MD.

PROPRIETORS AND GENERAL AGENTS OF
FREY'S VERMIFUGE FOR WORMS.

In Use 50 Years. Always Safe and Reliable.

CHAS. W. LOGAN'S BLOOD PURIFYING TONIC.

For Dyspepsia, Sick Headache and Blood Diseases.

A GRAND REMEDY.

Chas. W. Logan's Cough Mixture.

For Coughs, &c. Excellent. It Cures.

CHARLES W. LOGAN'S RHEUMATIC LINIMENT.

For Rheumatism, Sprains, Bruises, &c. One of the Best.

Chas. W. Logan's Great American Remedy

For Diarrhœa, Dysentery, Cramps, &c.

In great favor with all who use it.

DR. DRAKE'S COUGH SYRUP.


For Coughs, Croup, Asthma, &c.

HALL'S CHILL CURE.

For Chills and Malaria. A Sure Cure.

CHAS. W. LOGAN'S CHOICE FLAVORING EXTRACTS.

The Best in the Market.

 A fair trial of the above Remedies and Choice Flavoring Extracts will convince of their true merit. See page 108.

MUTH BROS. & CO.

IMPORTERS AND WHOLESALE

DRUGGISTS.

15 E. Fayette Street.

APOTHECARY SUNDRIES.

SHARP & DOHME.

MANUFACTURERS OF

Fluid, Solid and Powdered Extracts

Soluble Gelatine and Sugar-Coated Pills,

Soluble Hypodermic Tablets, Granular Effervescent Salts, and

301 to 307 W. Pratt St.

PHARMACEUTICAL PREPARATIONS GENERALLY.

WILLIAMS Z. F.

BROKER IN

Drugs, Chemicals,

Paints, Glass, Oils, Varnishes, Brushes, &c.

42 S. Charles Street.

See page 114.

WILLIAMS Z. F.

Medicinal * Whiskey.

MADE ONLY FOR DRUGGISTS.

SOLD ONLY TO DRUGGISTS.

42 S. Charles Street.

See page 64.

DRY GOODS—RETAIL.

SIMON CHAS. & SONS.

ESTABLISHED 1815.

FOREIGN
AND DOMESTIC

Dry Goods.

208 N. Howard Street.

Oldest Dry Goods House in Baltimore.

See page 78.

See article on MOTHER EARTH, pages 38, 40 and 42.

FOUTZ'S MEDICINES,

so long and favorably known, are prepared with the greatest care and of the very best ingredients that can be obtained.

Foutz's Celebrated Horse and Cattle Powders

have attained a world-wide reputation for their curative power and medicinal virtue. They stand pre-eminently as the leading stock powders of the age. "Farmers say so." The greatest care is taken in the selection of the ingredients, and they are scientifically compounded.

FOUTZ'S HORSE AND CATTLE POWDERS



No HORSE will die of COLIC, BOTS or LUNG FEVER, if Foutz's Powders are used in time.
Foutz's Powders will cure and prevent HOG CHOLERA.
Foutz's Powders will prevent GAPS IN FOWLS.
Foutz's Powders will increase the quantity of milk and cream twenty per cent., and make the butter firm and sweet.
Foutz's Powders will cure or prevent almost EVERY DISEASE to which Horses and Cattle are subject.
FOUTZ'S POWDERS WILL GIVE SATISFACTION.
Sold everywhere.

DAVID E. FOUTZ, Proprietor,
BALTIMORE, MD.

FOUTZ'S LINIMENT

has no superior for Rheumatism, Contracted Muscles, Stiffness in the Joints, Scalds or Burns, Corns, Bunions and Frosted Feet. For animals it is par-excellence.

Shriner's Balsamic Cough Syrup

cannot be excelled for Croup, Coughs, Colds, Whooping Cough, Asthma, Bronchitis, Pains and Weakness in the Breast, Difficulty of Breathing, &c.

SHRINER'S INDIAN VERMIFUGE

is guaranteed to destroy and expel worms from the human body where they exist, if used according to the directions. You are authorized to sell it on the above conditions.

DAVID E. FOUTZ, Prop'r,
BALTIMORE, MD.

HURST, PURNELL & CO.

WHOLESALE
 DRY GOODS
 —AND—
 NOTIONS.

Hopkins Place, German & Liberty Sts.

MILLER DANIEL & CO.

WHOLESALE
 DRY GOODS
 —AND—
 NOTIONS.

28 and 30 Hopkins Place.

PEARRE BROTHERS & CO.

IMPORTERS AND JOBBERS OF
 DRY GOODS
 —AND—
 NOTIONS.

107 W. Baltimore St.

PHILLIPS BROS. & CO.

WHOLESALE
 DRY GOODS.
 HEADQUARTERS FOR
 Cash and Short-Time Buyers.

309 W. German Street.

DYERS.

FISHER EMIL. CHEMICAL SCOURER,

AND AGENT FOR

OLD STATEN ISLAND

216 W. Fayette Street.

DYEING ESTABLISHMENT.

FISHER EMIL.

Ladies' Dresses Cleaned or Dyed
 WITHOUT RIPPING.

Gents' Suits Cleaned or Dyed

216 W. Fayette Street.

And Pressed in the neatest manner.
 Goods received by express or mail.

— THE —
GREAT AMERICANS,
— OR —
Michigan Congress Water

“The Water of Waters, and has proved itself to be the Best of All.”

*Language used in the Certificates of Officers, Attendants, Gatekeepers,
Police and Firemen at the recent*

World's Exposition at New Orleans.

Will relieve a Sick Headache in twenty minutes; a Sour Stomach or Heartburn in ten minutes, and sometimes instantly; Overdrinking Effects in from one-half to three-quarters of an hour. Urinary Irregularities relieved without the use of a catheter. Pain in the Back or Loins within a few days, according to the age of the consumer, except that with an aged or infirm person several weeks may be required.

Where many other remedies have failed, it has cured

*CATARRH OF BLADDER AND STOMACH, MALARIA, DYSPEPSIA,
DIABETES, GRAVEL, RHEUMATISM, DROPSY, KIDNEY,
LIVER AND FEMALE COMPLAINTS.*

In meeting the demand wished for in this country, where you drink it, there is the satisfaction of knowing it to be the genuine water, flowing from the great Artesian Well, 1,402 feet in bed rock, at the capital of Michigan, ordered by the State for the Fifth Session of the Legislature, at the rate of over \$100 per month. Our 2000-gallon tanks can be traced from the well more readily on tank cars visible to all, than through third or fourth hands in bottles or barrels.

LEWIS KALLING,

SOLE AGENT FOR MARYLAND,

Cor. South and Water Streets,

A Call or Correspondence solicited.

BALTIMORE, MD.

BAKER R. J. & CO. DYE WOODS,
INDIGO, GLUE,
GLYCERINE,
ACIDS, STARCH, ETC.
40 S. Charles Street. See pages 54 and 138.

ELECTRIC STORES AND SUPPLIES.

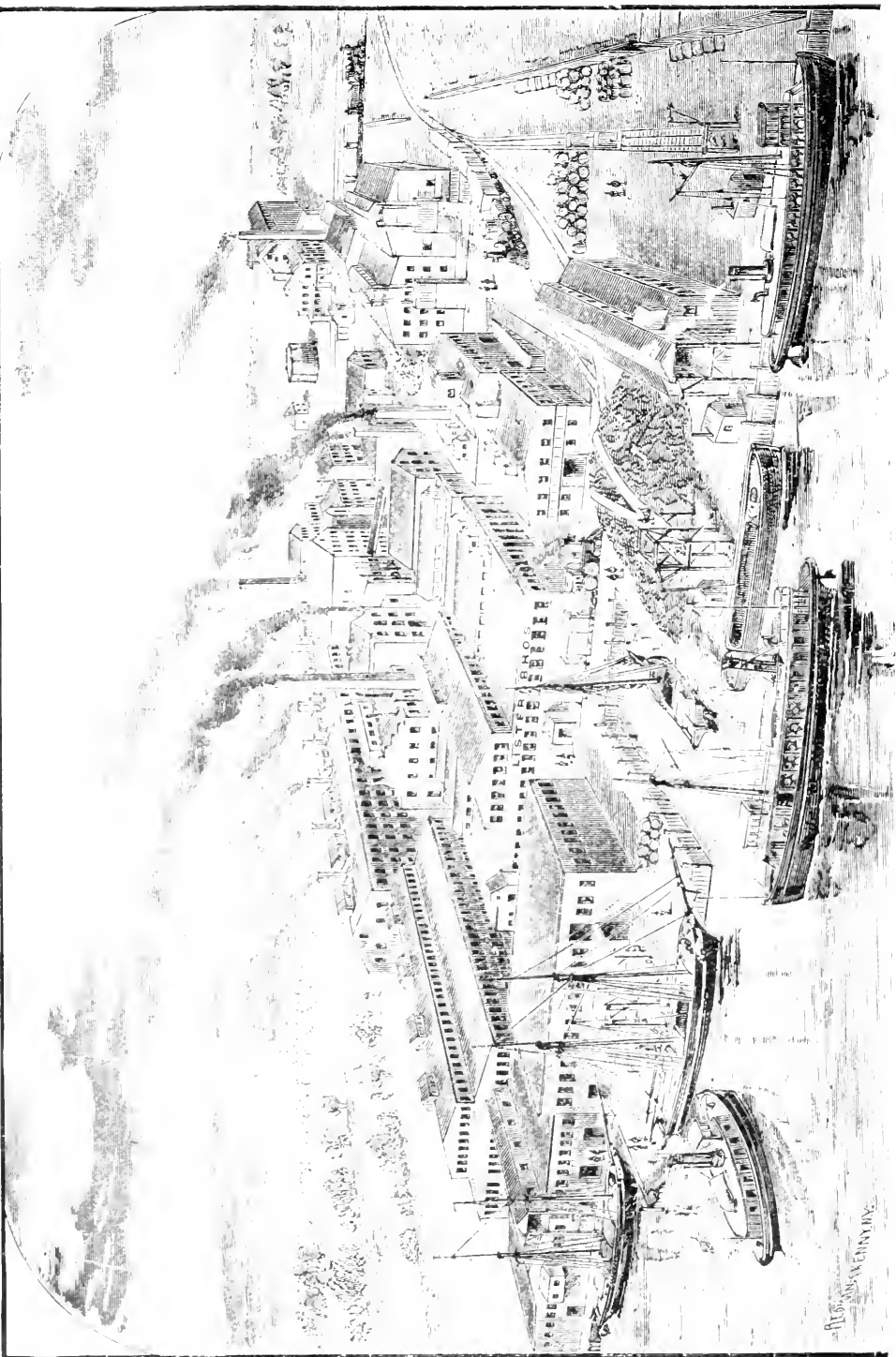
VIADUCT MFG. CO. TELEGRAPH,
TELEPHONE
AND
ELECTRICAL SUPPLIES
Cor. Charles and German Sts. Of Every Description.

ENGRAVERS—Dies, Seals, Stencils, &c.
SEE ALSO PRINTING PRESSES, ETC.

BAUMGARTEN WM. MANUFACTURER OF
RUBBER + STAMPS,
—SEALS—
STENCILS, ETC.
Cor. Holliday & Second Sts.

MULINARI P. ESTABLISHED 1853.
Manufacturer of
STENCILS,
STEEL & RUBBER STAMPS,
CORPORATION SEALS, Etc.
105 E. Lombard St., near Light.

See article on pages 12, 14 and 16. Also article on pages 38, 40 and 42.



—R.C. WOOD—NEWARK, N.J.

LISTER'S AGRICULTURAL CHEMICAL WORKS.
PURE BONE FERTILIZERS.

Office, 202-206 Euchanan's Wharf, Baltimore.

Factories, Newark, N. J.

BAKER R. J. & CO. FERTILIZERS
— AND —
CHEMICALS.

40 S. Charles Street.

See pages 54 and 138.

BALTIMORE GUANO CO.

MANUFACTURERS

GAME GUANO,

36 S. Charles St.

Baltimore Soluble Bone, &c.

Baltimore Pulverizing Co.

SHELL PHOSPHATE

\$7.50 PER TON.

Office, 224 St. Paul St.

Farmers' Favorite Fertilizer,

\$17.00 PER TON.

BAUGH & SONS.

MANUFACTURERS

Standard Bone Fertilizers

— AND —

HIGH-GRADE CHEMICALS.

239 South St.

Also Higgins' Wharf, Norfolk, Va.

BONDAY JAS. Jr. & CO.

IMPORTERS OF

❖ KAINIT ❖

MURIATE + OF + POTASH,

116 South Street.

NITRATE OF SODA.

BULLOCK JOHN & SON.

(ESTABLISHED 1839.)

Manufacturers of

Pure Raw and

71 Smith's Wharf.

Dissolved Bone.

CHAPPELL P. S. & SON.

(ESTABLISHED 1846.)

MANUFACTURERS OF

Fertilizers and

8 South Street.

Sulphuric Acid.

R. J. BAKER & CO.'S
HIGH GRADE
FERTILIZERS,
FOR ALL CROPS.

STAG SUPER PHOSPHATE,

For Potatoes and Tobacco.

Ammoniated Bone Super Phosphate,
For Cotton, Corn, Buckwheat and Wheat.

Bird Guano and Potash,

For Corn and Peanuts.

Pure Fine-Ground Raw Bone or Bone Meal,

PURE DISSOLVED RAW BONE,

No. 1 DISSOLVED RAW BONE,

Dissolved Animal Bone,

Dissolved S. C. Bone or Acid Phosphate,

Kainit, Muriate of Potash, Sulphate of
Ammonia, Nitrate of Soda, .

And all Chemicals used for Fertilizing.

SPECIAL FORMULAS COMPOUNDED.

R. J. BAKER & CO.

Office, 40 S. Charles St.

Factory, Locust Point,

BALTIMORE.

CHEMICAL CO. OF CANTON

38 South Charles St.

CHAS. J. BAKER, President.
 MANUFACTURERS
 Sulphuric Acid,
BAKER'S STANDARD GUANO
 AND
 DISSOLVED BONE PHOSPHATE.

Chesapeake Guano Co. The

21 Post Office Avenue.

MANUFACTURERS OF
 High-Grade Fertilizers.
 J. C. GRAFFLIN, President.
 W. H. CRAWFORD, Vice-President.
 A. C. PRACHT, Treasurer.

DAVISON WM. & CO.

Office, Room 18, Firemen Buildg.

MANUFACTURERS OF
FERTILIZERS
 FOR ALL CROPS.

DETRICK LOUIS F. & SON.

226 South Charles St.

GENERAL AGENTS FOR
Farmers' New Method Phosphate,
Bradley Pat. Super-Phosphate,
B. D. Sea-Fowl Guano,
CIRCLE BRAND BONE.

DORSEY M. T.

226 Dugan's Wharf.

HIGHLANDTOWN CHEMICAL WORKS.
 Fertilizers and Acids.
 —Fertilizing Materials a Specialty—

HOLLOWAY, J. Q. A.

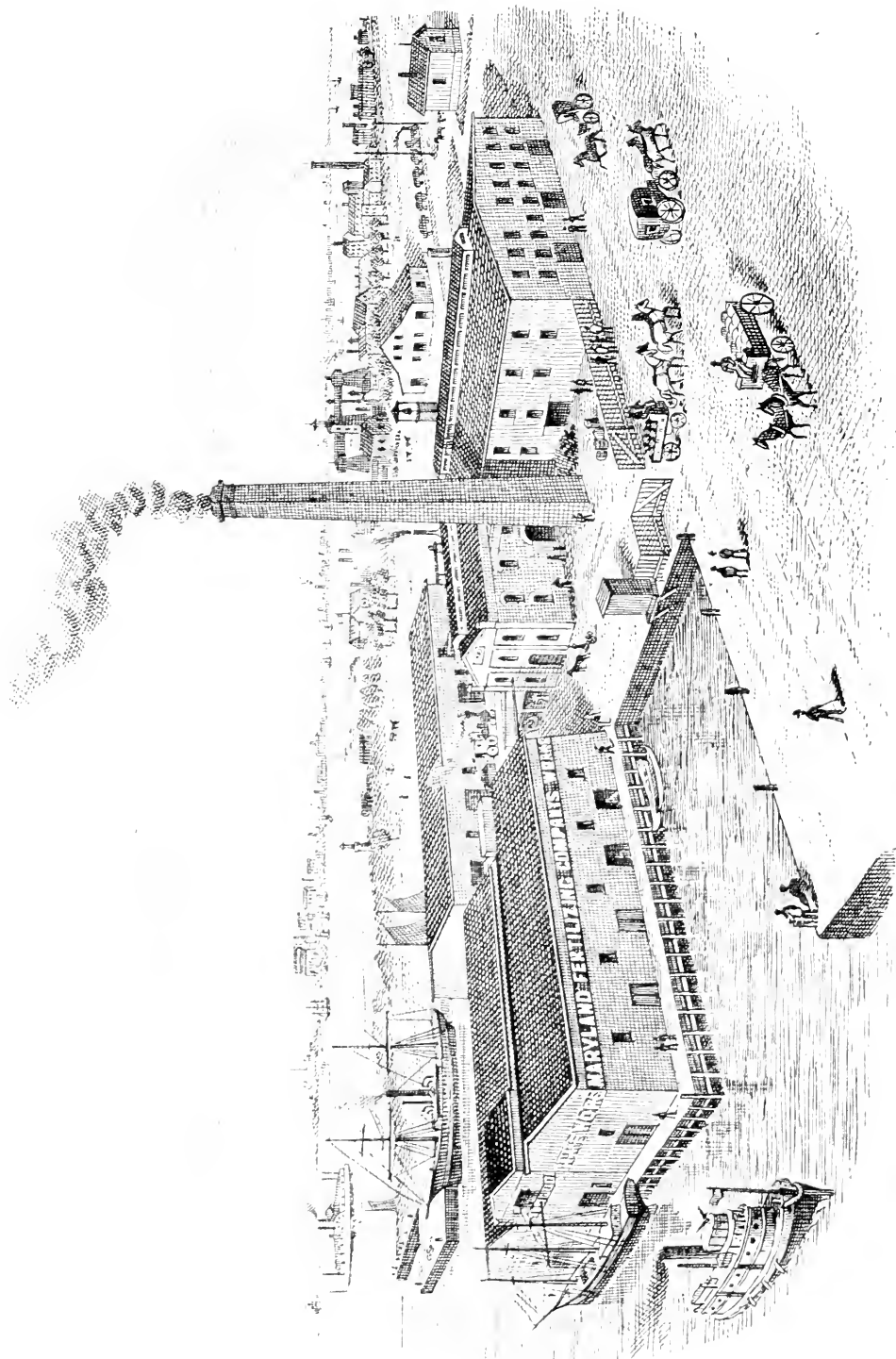
305 McElderry's Wharf.

IMPORTER OF
PERUVIANGUANO
 MANUFACTURER OF
 "EXCELSIOR" & "AMMONIATED
 PHOSPHATE."

LIEBIG & GIBBONS

303 Exchange Place.

MANUFACTURERS
A No. 1 Tobacco Fertilizers,
 —LIEBIG—
 —AMMONIATED SUPER-PHOSPHATE,—
 Flamingo Guano.



MARYLAND FERTILIZING AND MANUFACTURING COMPANY,
 Manufacturers of Fertilizers of All Kinds.
 Office, No. 30 S. Holliday St., Baltimore.

Lister's Agr'l Chem. Works.

PURE BONE
FERTILIZERS.

202-206 Buchanan's Wharf.

See pages 52 and 134.

Maryland Fert. & Mfg. Co.

FERTILIZERS

OF ALL KINDS.

Office, 30 S. Holliday Street.

See pages 56 and 132.

G. OBER & SONS CO.

MANUFACTURERS OF
"STANDARD FERTILIZERS."

DEALERS IN

FERTILIZING MATERIALS.

ROBT. OBER, Prest.

JNO. A. HAMLERTON, Vice-Prest.

JOHN K. OBER, Sec'y and Treas.

33 South Gay St.

PATAPSCO GUANO CO.

MANUFACTURERS

—OF—

ORGANIZED 1868.

FERTILIZERS

Piedmont Guano & Mfg. Co.

ESTABLISHED 1869.

FERTILIZERS

109 South Street.

FOR ALL CROPS.

PITT CHAS. F. & SONS.

FERTILIZING CHEMICALS.

PERUVIAN REFINED

+ NITRATE OF SODA.+

GERMAN POTASH SALTS

31 South Street.

Popplein Silicated Phos. Co.

FERTILIZERS.

222 E. Baltimore Street.

PETROLEUM.

AS AN ILLUMINATOR.

The observation that the man who makes two blades of grass grow where only one grew before, is a benefactor to his race, finds an analogy in the assertion that he who practically adds to the span of man's life by increasing the number of hours wherein he can labor or enjoy himself, is also a benefactor.

The nineteenth century has been marked in its course by a greater number of inventions and improvements, promotive of human civilization and happiness, than any like period preceding it, and perhaps no feature of its record is more significant or beneficent than the improved methods of lighting our dwellings, brought into use largely through the instrumentality of the

GREAT LIGHT-BEARER, PETROLEUM.

Its welcome, cheerful, steady flame gladdens the cabin of the Western emigrant on his trail through the trackless forest, and lights up the hut of the miner. It cheers equally the home of the thrifty farmer and the rude quarters of the humblest laborer. Its bright rays lend their kindly aid to the thousand homely cares which give zest and happiness to the family circle. Thus the sum of human knowledge is increased and the aggregate of wealth added to by the useful occupancy of hours snatched from darkness and sleep, and thus, practically, man's life has been extended and opportunities of usefulness increased.

MINERAL OILS AS LUBRICANTS.

The advantages, both pecuniary and beneficial, accruing to modern civilization from the introduction of heavy products of petroleum, used for the lubrication of machinery, are hardly second to those resulting from the introduction of the cheap and beautiful light furnished by its illuminating portion.

Professor Thurston, of Cornell University, in his "Treatise on Friction and Lost Work in Machinery and Mill Work," says the best lubricants are, in general, the following for usual conditions met in practice:

Under low temperatures, as in rock-drills driven by compressed air, light mineral lubricating oils.

Under very great pressure with slow speed, graphite, soapstone and other solid lubricants.

POWELL W. S. Powell's Fertilizers,
 —AND—
 POWELL'S PREPARED CHEMICALS
 For making Fertilizers at home. Send
 for Pamphlet.
 No. 16 Light Street.

REESE JOHN S. & CO. AGENTS FOR
 Pacific Guano Co.'s
 BRANDS.
 No. 10 South Street.

TURNER J. J. & CO. EXCELSIOR
 Ammoniated Bone Super-Phosphate
 AND
 PERUVIAN GUANO.
 602 E. Pratt Street.

TURNER ROBERT & SON. DEALERS IN
 Guano, Grain ^{and} Seed,
 High-Grade Super-Phosphate,
 STYLED BONA FIDE.
 POUURETTE A SPECIALTY.
 105 S. Frederick St.

WALTON & WHANN CO. ESTABLISHED 1861.
 —
 MANUFACTURERS OF
 High-Grade Fertilizers.
 South and Water Sts.

WHITMAN E. B. British Mixture.
 828 S. Howard St.

WILLIAMS Z. F. BROKER IN
 † FERTILIZERS †
 AND
 Fertilizing Materials.
 42 S. Charles Street.

Under heavy pressure with slow speed, the above and lard, tallow and other greases.

Heavy pressure and high speed, sperm oil, castor oil and heavy mineral oils.

Light pressure and high speed, sperm, paraffine and other fine product of mineral oil.

Professor Thurston thus speaks of the mineral machinery oils: "The consumption is largely increasing. They are used on all kinds of machinery. They are the safest and cheapest lubricators, and generally superior to animal and vegetable oils and greases. They are safer on account of their non-oxidizing properties and their high fire-test, or the great heat they will resist before vaporizing. They are cheaper in price and more economical, saving both machinery and fuel. They last longer and work cleaner, and are perfectly free from acids and all impurity. They neither gum nor stain materials or the manufacturers' products."

The best oil is that which has the greatest adhesion to metallic surfaces and the least cohesion in its own particles; in this, fine mineral oils stand first, sperm oil second, neat's-foot oil third, and lard oil fourth. Consequently the finest mineral oils are best for light bearings and high velocities. The best animal oil to give body to fine mineral oils is sperm oil. Lard and neat's-foot oil may replace sperm when greater tenacity is required.

BALTIMORE

is the principal point of distribution for the near-by and Southern States, and, with the export trade, which for the year 1886 shows an increase of five million gallons, is an important item in the business of the city.

The total distribution is valued at \$2,500,000.

The representatives in this line have commanded a high position for this market by the most commendable and conservative conduct of the business, which is liable to experience much greater extension in the near future.

WOOLDRIDGE R. A. & CO. ORCHILLAGUANO

A SPECIALTY FOR

218 Buchanan's Wharf.

GRAIN & GRASS.

ZELL GUANO CO. THE

MANUFACTURERS OF

—**ZELL'S**—

Ammoniated and Acid Phosphates.

30 South Street.

H. S. ZELL, President.

P. B. HOGE, Sec'y and Treas.

See special article on Fertilizers, entitled MOTHER EARTH AND THE FERTILIZING INDUSTRY, pages 38, 40 and 42.

FISHING TACKLE, TWINE, NETTING, & C.

DUKEHART J. & CO.

IMPORTERS OF

Fine Fishing Tackle

*Chesapeake Brand Gilling Threads.*Manufacturers Linen Gill Netting, Cotton Seine
Twines and Ropes.

220 E. Baltimore St., near North.

Send for Catalogue.

JOHNSON J. S. & CO.

MANUFACTURERS

Seines, Netting, Twines.

IMPORTERS

121 South Street.

Gilling Thread, Fishing Tackle, &c.

See article on page 28. Also article on pages 58 and 60.

PATAPSCO FLOURING MILLS

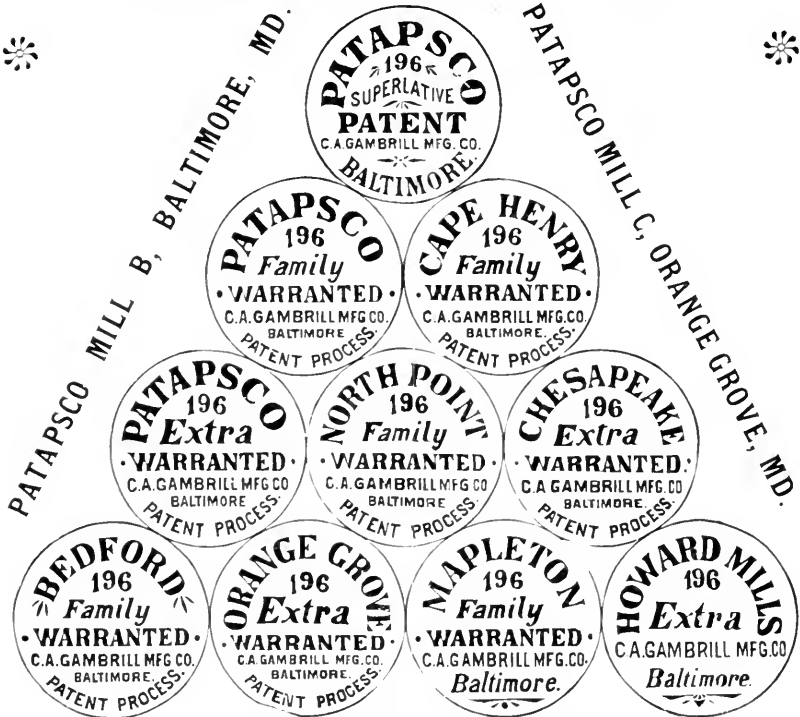
ESTABLISHED 1774.

BUHRS 1774.

ROLLS 1882.

THIS COMPANY OWNS AND OPERATES THREE MILLS, AS FOLLOWS

PATAPSCO MILL A, ELLICOTT CITY, MD.



DAILY CAPACITY, 2200 BARRELS.

THE "PATAPSCO SUPERLATIVE" is the Premier Flour of America, manufactured chiefly from Maryland and Virginia Wheat, which has long been conceded to be the best, because it has a better combination of Gluten and Phosphates than any other. This celebrated brand commands the highest price in this country, and in the United Kingdom brings more money than any other American Flour.

C. A. GAMBRILL MFG. CO.,

BALTIMORE, MD.

C. A. GAMBRILL MFG. CO.

—✦ FLOUR. ✦—

Office, 214 Commerce St.

✦ See pages 62 and 136.

EGERTON SAM'L E. & CO.

RECEIVERS + AND + JOBBERS
OF

(SUCCESSORS TO CHAS. TYLER)

—✦ FLOUR. ✦—

10 Spear's Whf. & 18 Water St.

Gootee's Superlative, S. E. Egerton & Co.'s
Roller Patent, Tyler's Best Family, Rob Roy
Extra, &c.

MUDGE, SMITH & CO.

✦ FLOUR. ✦

4 Spear's Wharf.

SNOW E. J. & CO.

RECEIVERS and JOBBERS

OF

75 Smith's Wharf.

✦ FLOUR. ✦

WILLIAR GEO. P. & SON.

✦ FLOUR. ✦

9 & 11 E. Camden St.

SEND FOR PRICE LIST.

WILSON, PALMER & CO.

WHOLESALE
DEALERS IN FLOUR.

Howard & Lombard Sts.

PAY SPECIAL ATTENTION TO THIS
BRANCH OF THE TRADE.

—✦ WHOLESALE & GROCERS. ✦—

See article on pages 12, 14 and 16. Also article on pages 38, 40 and 42.

THE ONLY ARTICLE IN THE
UNITED STATES
SOLD EXCLUSIVELY TO
DRUGGISTS
IS THE
ANOSAN
[TRADE MARK]
MEDICINAL PURE RYE WHISKEY.

SUPPLIED TO
DRUGGISTS AND PHARMACISTS
ONLY.

ALL OTHER TRADE REFUSED.

THIS IS A PURIFIED RYE WHISKEY,
WARRANTED FREE FROM FUSEL OIL.

Druggists and Physicians recommend it to all who need a Pure,
Health-giving Stimulant, and for general Medicinal Purposes.

PRICES LOW FOR PURE GOODS.

Z. F. WILLIAMS,
SALES AGENT FOR THE UNITED STATES,
42 S. Charles Street,

(ESTABLISHED 1871.)

See page 114.

BALTIMORE.

BELL J. E. & CO.

ORANGES.

Lemons, Bananas, Cocoanuts,

205 & 207 Bowly's Wharf.

APPLES, POTATOES, &c.

DIX & WILKINS.

Importers and Dealers in

FOREIGN FRUITS.

9 E. Lombard St.

PALMER EDW'D L. & CO.

Importers and Jobbers of

FOREIGN FRUITS & FANCY GROCERIES.

Domestic Dried and Canned Goods

AND

COMMISSION MERCHANTS.

16 E. Lombard St.

STAEBLEIN THEO.

WHOLESALE DEALER IN

Foreign and Domestic Fruit.

LIMES,

Florida Oranges, California Fruits

124 S. Charles Street.

A SPECIALTY.

FURNITURE MANUFACTURERS.

BUCK IRVING.

BALTIMORE + DESK + WORKS.

OFFICE DESKS, CASES

AND

749 & 751 W. Pratt St., above Fremont.

CABINET + FURNITURE.

FRITTER J. A. & CO.

MANUFACTURERS OF

FURNITURE.

623 to 633 W. Pratt Street.

FINE BOOK AND PAMPHLET WORK.

RECENTLY REMOVED TO NEW SIX-STORY BUILDING AND WITH GREATLY INCREASED FACILITIES PREPARED TO EXECUTE THE MOST EXTENSIVE ORDERS WITH PROMPTNESS AND AT VERY REASONABLE RATES.

ISAAC FRIEDENWALD

WM. DEUTSCH, MANAGER.

≡≡≡
32 S. PACA ST.
(TELEPHONE 1233)
BALTIMORE.

PRINTING,
LITHOGRAPHING,
ENGRAVING,
BOOKBINDING.



THIS BOOK A SPECIMEN OF OUR PRINTING AND BINDING. LEADING FIRMS, CORPORATIONS AND INSTITUTIONS IN THIS SECTION OUR REFERENCES. CORRESPONDENCE SOLICITED, ESTIMATES FURNISHED.

ARTISTIC SHOW CARDS AND LABELS.

KLIPPER, WEBSTER & CO.

FURNITURE

5 and 9 South Calvert Street.

KNIPP JOHN C. & BRO.

MANUFACTURERS AND DEALERS IN
Fine Furniture,
Upholstery and Gas Fixtures.
 PIER AND MANTEL MIRRORS,
 CURTAINS, ETC.

121 and 123 N. Howard St.

SIEHLER & HEBRANK.

Manufacturers of all kinds of
Pillar, Round and Drop-Leaf
Extension & Tables
 in Walnut, Ash and Imitation Walnut, in best style and quality.

405 & 407 W. Barre Street.

STRAUS M. L. & SONS.

MANUFACTURERS OF
 PARLOR, CHAMBER, HALL AND
 OFFICE
FURNITURE.
 DEALERS IN
 Carpets, Oil Cloths, Matting, Rugs, Etc.

101, 103 & 105 N. Howard St.

THOMAS JOSEPH & SON.

CHURCH FURNITURE.

Pews, Pulpits, Altar Work, Gothic
 Frames, Sash, Etc.

OFFICE AND FACTORY :

818 to 832 Leadenhall Street.

Office and Bank Furniture.

Wilfson Wm. & Co., Limited.

EAGLE FURNITURE WORKS.

MANUFACTURERS OF

FURNITURE.

45 South Gay Street.

FACTORY, CROSS & EUTAW STS.

WILSON WM. V. & CO.

MANUFACTURERS OF

Furniture.

Uhler's Alley.

SWINDELL BROS.

MANUFACTURERS OF

BALTIMORE WINDOW GLASS,

DRUGGISTS' FLINT
AND
GREEN GLASSWARE,

BEER AND WINE BOTTLES,

FLASKS, DEMIJOHNS,

FRUIT JARS.

IMPORTERS OF

Polished,

Rough and

Crystal

PLATE GLASS.

10 E. LOMBARD ST.,

BALTIMORE.

TAYLOR R. Q. & CO.

IMPORTERS AND MANUFACTURERS

FURS,

Opp. Barnum's Hotel.

HATS AND UMBRELLAS.

GAS MACHINES.

KEMP CLARENCE M.

CLIMAX GAS MACHINE.

CLIMAX GAS MACHINE.

Gasoline for Gas Machines.

PLUMBING, ETC.

Fayette & Frederick Sts.

See page 70.

GLASS MANUFACTURERS.

Window and Bottles.

BAKER BROTHERS & CO.

MANUFACTURERS

Baltimore & Window & Glass

AND

36 & 38 S. Charles St.

Druggists' Flint and Green Glassware.

KING WM. & BRO.

MANUFACTURERS OF

Baltimore & Window & Glass.

2 N. Liberty Street.

SEIM HENRY & CO.

MANUFACTURERS OF

Window & and & Ornamental & Glass.

IMPORTERS OF

Howard & Fayette Sts.

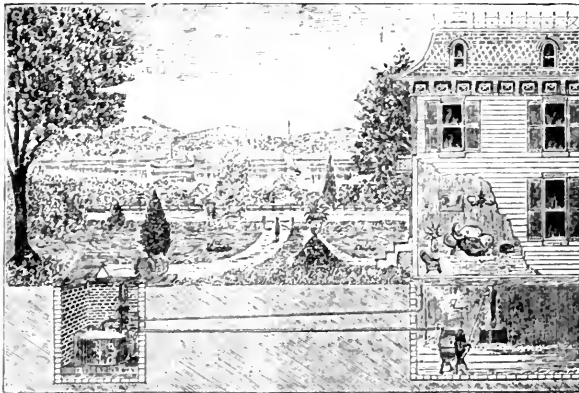
FRENCH WINDOW AND PLATE GLASS.

GAS LIGHT

FOR

HOTELS, CHURCHES,
HOMES, FACTORIES, STORES,
&c., &c.

THE CLIMAX GAS MACHINE



Makes an exceedingly brilliant, steady, smokeless Gaslight,
at a cost much less than city gas.

IT CAN BE ADAPTED ANYWHERE.

Set aside lamps and improve with gas instead, as nothing is more desirable than a cheerful, well-lighted home, store or church. Almost any home can be supplied at very small cost. Write for pamphlet and prices.

CLARENCE M. KEMP,
Fayette and Frederick Streets,
BALTIMORE.

All kinds of inventions perfected and placed on the market.

SWINDELL BROS.

MANUFACTURERS OF
WINDOW GLASS

AND
Druggists' Flint & Green Glassware.

10 E. Lombard Street.

See pages 68 and 130.

SWINDELL BROS.

MANUFACTURERS OF
Druggists' Flint & Green Glassware

AND
WINDOW GLASS.

10 E. Lombard Street.

See pages 68 and 130.

WILLIAMS Z. F.

BROKER IN
WINDOW GLASS,

DRUGGISTS' GLASSWARE,
PAINTS, OILS, ETC.

42 S. Charles Street.

See pages 108 and 114.

GROCCRS—WHOLESALE.

CARROLL W. J. & CO.

WHOLESALE GROCERS

AND

123 S. Calvert St. and 122 Cheapside.

COMMISSION MERCHANTS.

CARSON W. K. & CO.

Importers and Wholesale Dealers in
GROCERIES.

Lombard and Calvert Sts.

Choice Coffees

OF ALL KINDS.

MYER JAS. & CO.

WHOLESALE
GROCERS.

131 Cheapside.

WM. B. MYER,
H. B. CHRISTILF.

THE HAWTHORN
EXCELSIOR
ROOF PAINT.

HAS BORNE THE TEST OF DURABILITY OF YEARS.

In the past seven years many MILLION square feet of tin and iron roofs have been covered with it in Baltimore city, Maryland and other States.

DAMP BRICK WALLS MADE DRY WITH IT.

It is Elastic! Adhesive!

WATER-PROOF!

STICKS FAST on TIN, IRON, BRICKS, or WOOD.

DRYING HARD in SUN and WEATHER in a few hours, with a GLAZED SURFACE.

WILL PRESERVE METALS FROM RUST MUCH LONGER THAN ANY OTHER PAINT IN USE AND AT LESS COST.

Put up in Cans, 2 to 5 Gallons each, and in Barrels. Send for Prices.

E. W. ROBINSON,

SOLE PROPRIETOR AND MANUFACTURER,

No. 368 Boundary Ave.

BALTIMORE, MD.

POWELL WM. M. & CO.**WHOLESALE GROCERS**

—AND—

RECEIVERS AND JOBBERS IN

112 South Street.

—FLOUR.—

REESE THOMAS L.

Successor to G. H. REESE & BROS.

FINE GROCERIES.

ESPECIALLY

—TEAS—

107 & 109 W. Pratt Street.

Wholesale and Retail.

WILSON, BURNS & CO.**WHOLESALE GROCERS.**

→FLOUR←

Howard, Lombard and Liberty Sts.

IN ALL SIZE PACKAGES FOR
SOUTHERN TRADE.**WILSON, PALMER & CO.****WHOLESALE GROCERS.**

Importers and Dealers in

FLOUR, SYRUPS,

Howard and Lombard Sts.

*CANNED GOODS, ETC.***GUNS, PISTOLS, SPORTING GOODS, &c.****CASSARD & CO.**

Wholesale Dealers and Manufacturers' Agents for

SPORTING + GOODS

OF ALL KINDS.

Base Ball and Boxing Gloves.

20 E. German Street.

Revolvers, Checks, Gymnasium Outfits and any-
thing in Sporting Goods line.**McCOMAS ALEX.**

MAKER AND IMPORTER OF

Guns, Rifles, Pistols

—AND—

22 S. Calvert St., Baltimore.

SPORTSMEN'S GOODS.

MAX KOHNER,



WHOLESALE DEALER IN

ELGIN AND WALTHAM WATCHES,

IN

GOLD, GOLD-FILLED, AND SILVER CASES.

GOLD AND ROLL-PLATED

JEWELRY

OF ALL DESCRIPTIONS.

Spectacles and Eye Glasses a Specialty.

Lowest Prices, and Quality of Everything
Guaranteed.

MAX KOHNER,

7 S. Charles Street,

BALTIMORE, MD.

PATTERSON W. P.

38 East Pratt Street.

BREECH AND MUZZLE-LOADING

* * * **GUNS** * * *

‡Revolvers, Rifles, Ammunition‡

LEATHER, CANVAS GOODS, &c.

WERTSNER C. S. & CO.

2 Light St. (opp. Carrollton Hotel)

*Guns, Rifles, Revolvers,
Ammunition,**Sporting Goods.*

HARDWARE—Cabinet, General, Upholsterers', Etc.

FOR CARRIAGE HARDWARE, SEE CARRIAGE GOODS, ETC.

CASSARD & CO.

20 East German Street.

WHOLESALE DEALERS AND MANUFACTURERS' AGENTS FOR

HARDWARE, CUTLERY,*Revolvers, &c.*

Chesapeake (The) Mfg. Co.

449 North Street.

STEEL and BRASS WOOD SCREWS,**STEEL WIRE NAILS,****STOVE AND TIRE BOLTS,****RIVETS, WASHERS, &c.**

DUER JOHN & SONS.

24 South Charles St.

Cabinet Hardware.**FURNITURE HARDWARE**

OF ALL KINDS.

 See article on pages 12, 14 and 16.



NOAH WALKER & CO.

The Celebrated **CLOTHIERS** of Baltimore, Md.

Announce the introduction of a plan of ordering **CLOTHING and UNDERWEAR BY LETTER**, to which they call your special attention. They will send on application their improved and accurate *Rules for Self-Measurement*, and a full line of samples from their immense stock of

Cloths, Cassimeres, Coatings, Shirtings, &c.

A LARGE AND WELL-ASSORTED STOCK OF

READY-MADE CLOTHING always on hand, together with a full line of **FURNISHING GOODS.**

A COMPLETE ASSORTMENT OF

CHILDREN'S BLOUSE SUITS AT FROM \$2 to \$4.

Manufacturers and Dealers in Men's and Boys' Clothing and Furnishing Goods, either Ready-Made or Made to Order.

☞ A DISCOUNT OF TEN PER CENT. ALLOWED ALL CLERGYMEN. ☞

New Nos. 119 ^{AND} 121 East Baltimore Street,
BALTIMORE, MD.

Branch Stores: { No. 625 Pennsylvania Avenue, Washington, D. C.
No. 143 Sycamore Street, Petersburg, Va.

BROWN M. J. & W. A. † Commission Merchants †
 AND DEALERS IN
HAY, GRAIN,
 717 and 719 East Pratt St. **FEED, &c.**

HIDE AND LEATHER DEALERS.

DODGE WM. E. & SON. BUYERS OF
 ‹HIDES, SKINS›
 AND
 TALLOW.
 38 South Calvert St. Correspondence Solicited.

LARRABEE E. & SONS. WHOLESALE DEALERS IN
 HIDES, LEATHER,
 —AND—
 SHOE FINDINGS.
 Calvert and German Sts.

MULLIKIN WM. L. & CO. COMMISSION
 LEATHER,
 HIDES, OILS, &c.
 26 South Calvert Street.

See articles on page 28.

See article on pages 58 and 60.

Oldest Dry Goods House in Baltimore.

CHAS. SIMON & SONS.

No. 208 NORTH HOWARD STREET.

ESTABLISHED IN 1816.

IMPORTERS AND DEALERS IN

SILK DRESS GOODS, WOOLEN DRESS GOODS,
COTTON DRESS GOODS, LINEN DRESS GOODS,
ENGLISH CRAPE, SHAWLS, WHITE GOODS,
DOMESTIC COTTON GOODS,
LACE CURTAINS, LINEN GOODS,
TABLE CLOTHS, QUILTS, BLANKETS,
COMFORTS, FURNITURE COVERINGS,
MERINO UNDERWEAR, HOSIERY,
GLOVES, HANDKERCHIEFS,
LACES, EMBROIDERIES,
FLANNELS, CLOTHS, CASSIMERES, CLOAKING,
ETC., ETC.

Orders for Samples solicited and sent by mail free of charge.
Orders for goods amounting to \$20 or over sent free of freight
charge, by express.

DRESSMAKING DEPARTMENT.

Rules of self-measurement, samples of material, with estimate of
cost, sent upon application.

Descriptive catalogue of our stock sent free when desired.

Terms Cash.

FOUTZ DAVID E.
FOUTZ'S
HORSE and CATTLE POWDERS
AND
Foutz's † Medicines.

 See pages 48 and 138.

HOTELS.

CARROLLTON HOTEL.

 CENTRALLY LOCATED,
 POPULAR, ∴ COMMODIOUS,
 WITH ALL

MODERN CONVENIENCES, ETC.

Baltimore, Light & German Sts.

 See page 18.

HUB MANUFACTURERS.

SEE ALSO CARRIAGE GOODS, ETC.

STINSON JOHN.
BALTIMORE
HUB + FACTORY.

330 N. Holliday St.

 Also Dealers in Carriage Hardware.

STORCK A. & SONS.

◀ MANUFACTURERS OF HUBS.

ALSO DEALERS IN

 557 & 559 E. Monument Street,
 1066 N. Front Street.

 LUMBER, SASH, DOORS,
 BLINDS, &c.

 See article on pages 30, 32, 34 and 36.

UNITED STATES

States and Territories.	Electoral Vote by States.	Population by States.
Alabama	10	1,262,505
Arizona.....	...	40,440
Arkansas	7	802,525
California.....	8	864,694
Colorado.....	3	194,327
Connecticut.....	6	622,700
Dakota.....	...	135,177
Delaware.....	3	146,608
District of Columbia.....	...	177,638
Florida.....	4	269,494
Georgia.....	12	1,542,359
Idaho.....	...	32,610
Illinois.....	22	3,077,871
Indiana.....	15	1,977,301
Iowa.....	13	1,624,615
Kansas	9	996,096
Kentucky.....	13	1,648,690
Louisiana.....	8	939,946
Maine.....	6	648,936
Maryland.....	8	934,943
Massachusetts.....	14	1,783,085
Michigan.....	13	1,636,937
Minnesota.....	7	780,733
Mississippi.....	9	1,131,597
Missouri.....	16	2,168,380
Montana.....	...	39,159
Nebraska.....	5	452,402
Nevada.....	3	26,266
New Hampshire.....	4	346,991
New Jersey.....	9	1,131,116
New Mexico.....	...	119,565
New York.....	36	5,082,871
North Carolina.....	11	1,399,750
Ohio.....	23	3,198,062
Oregon.....	3	174,768
Pennsylvania.....	30	4,282,891
Rhode Island.....	4	276,531
South Carolina.....	9	995,577
Tennessee.....	12	1,542,180
Texas.....	13	1,591,749
Utah.....	...	143,963
Vermont.....	4	332,286
Virginia.....	12	1,512,565
Washington.....	...	75,116
West Virginia.....	6	618,457
Wisconsin.....	11	1,315,497
Wyoming.....	...	29,789
Total.....	401	52,152,866

Anglo-Nevada Assurance

CORPORATION.

406 Second Street.

FIRE AND MARINE.

Cash Capital, \$2,000,000.

LAWFORD & MCKIM,
GENERAL AGENTS.**Home Fire Insurance Co.**

OF BALTIMORE.

10 South Street.

INCORPORATED 1867.

INSURES GENERALLY AGAINST
LOSS BY.....**FIRE**.....**Maryland Fire Insurance Co.**

OF BALTIMORE.

Second St. and Post-Office Ave.

INCORPORATED 1858.

INSURES PROPERTY AGAINST
LOSS BY.....**FIRE**.....**ROYAL INSURANCE CO.**

OF LIVERPOOL, ENG.

15 South Street.

BALTIMORE DEPARTMENT.

R. EMORY WARFIELD, Manager.

The Royal has the largest net surplus of any Fire
Insurance Company *in the world.*Losses paid as soon as ascertained, without the
usual discount for cash payment.**INSURANCE—LIFE.****BRESEE O. F. & SONS.**

213 E. German Street.

GENERAL AGENTS

Mutual Life Ins. Co.

OF NEW YORK.

The Largest Insurance Company in the
World.

See article on pages 12, 14 and 16.

BANKING.

LEGAL OR BANK HOLIDAYS :

NEW YEAR'S DAY,
FOURTH OF JULY,
THANKSGIVING DAY,
CHRISTMAS DAY.

☞ The Above Days are Observed in all the States. ☞

The following days are kept as holidays by the Banks in SOME of the States : *WASHINGTON'S BIRTHDAY, GENERAL ELECTION DAYS, GOOD FRIDAY, DECORATION DAY.*

GRACE IS ALLOWED ON SIGHT DRAFTS IN THE FOLLOWING-NAMED STATES, ETC.—VIZ.:

ALABAMA,	DAKOTA,	INDIANA,
IOWA,	KENTUCKY,	MAINE,
MASSACHUSETTS,	MICHIGAN,	MINNESOTA,
MISSISSIPPI,	MONTANA,	NEBRASKA,
NEW HAMPSHIRE,	NEW JERSEY,	NORTH CAROLINA,
OREGON,	RHODE ISLAND,	SOUTH CAROLINA,
UTAH,	WISCONSIN,	WYOMING,

Also CANADA.

Unless the words "*without grace*" are inserted, all Sight Drafts on these States are held by the Banks 3 days after presentation, before collections can be enforced.

CLARKE ADDISON & BRO.

IRON, STEEL AND NAILS.

102 E. Lombard St.

GREER JOHN J. & CO.

BAR IRON,
NAILS, * STEEL,

207 & 209 W. Pratt St.

HORSE SHOES. &c.

SMITH A. W. & CO.

IRON, NAILS, STEEL, &c.

604 E. Lombard St.

Thompson, Ashburner & Co.

BAR. HOOP,
Plate and Sheet Iron,

25 S. Gay St.

R. R. Bar, Cast Steel, Nails, &c.

WETHERALL W. G.

IRON AND STEEL.

113 and 115 S. Calvert Street and
112 and 114 Cheapside.

WYETH W. N.

IRON & STEEL, BOILER PLATES,

BOILER TUBES, PIPE, &c.

Charles and Lombard Sts.

IRON, STEEL AND HORSE SHOES.

Winternitz Sam'l G. & Bro.

214-224 S. Howard Street,
306 and 308 W. Camden Street.

Bar Iron and Steel, Heavy Hardware, Tools and Machinery. Wagon and Carriage Material. Agents for the Bolton Steel Co., Manhattan Rolling Mill, Boynton & Plummer's (Hand and Power) Upright and Horizontal Self-Feeding Drills, Bolt Cutters and Other Labor-Saving Machinery. Phoenix Horse and Mule Shoes, Brydon's Patent Calked Horse and Mule Shoes, New Haven and Champlain Horse Shoes, McLean Horse Shoe Pad Co., Culver Patent Shoe Shapes, Champion Blower and Forge Co., Pennsylvania Bolt and Nut Co.

GEORGIA.



Georgia, the most populous of the South-Atlantic States. Farthest south and latest settled of the thirteen original States: named in honor of George II of England.

Area, 59,475 square miles; extreme length, 320 miles; extreme breadth, 254 miles.

Savannah, Brunswick and St. Mary's are ports of entry. Savannah is the second cotton port of the United States. Columbus contains largest cotton-mill in the South. Augusta is one of the leading manufacturing centres in the South.

Average value per acre of farms, \$6.93; woodland, \$5.45.

Ranks second in rice and sweet potatoes; third in cotton and molasses; fourth in sugar.

Gold, coal and iron in some counties.

Salaries of State Officials:—Governor, \$3000; Secretary of State, \$2000; Treasurer, \$2000; Attorney-General, \$2000; Chief Justice, \$2500; Associate Justices, \$2500; Senators and Representatives, \$4.00 per day and mileage.

Presidential Post-Offices:—Albany, \$1600; Athens, \$1900; Atlanta, \$3300; Augusta, \$2800; Columbus, \$2500; Macon, \$2700; Rome, \$2300; Savannah, \$3200.

Number electoral votes, 12.

Idiots, insane, criminals and non-taxpayers excluded from voting.

State University at Athens.

Legal interest, 7; by contract, 8.

BRECHT LOUIS. Variety Iron Works.

CAST AND WROUGHT-IRON WORK.

Iron Safe Doors, Balconies, Awnings, Building Work, Ornamental Work; Iron Railings, Porches, Hothouses, Hay Racks, Settees, Bedsteads, &c.

Satisfaction Guaranteed.

316 W. Franklin St., above Howard.

KRUG G. & SON. Manufacturers of every description of
Wrought & Cast-Iron Work,

—RAILING—

Shutters, Doors, Balconies, Verandas, Cresting, Vanes, Finials.

Builders' Iron Work. Etc.

S. W. Cor. Saratoga & Jasper Sts.

PAGELS GEO. H. & SON. Railing, Vault Doors

—AND—

IRON SHUTTERS.

ALL KINDS OF BUILDERS' IRONS, &c.

STIRRUPS A SPECIALTY.

N. E. Cor. Saratoga & Jasper Sts.

See article on pages 58 and 60.

See article on page 28.

See article on pages 38, 40 and 42.

See article on pages 30, 32, 34 and 36.

MARYLAND.

"THE GASTRONOMIC CENTRE OF THE UNIVERSE."



One of the thirteen original States; named in honor of Henrietta Maria, wife of Charles II, King of England; first permanent settlement in 1634, at St. Mary's, by English Roman Catholics.

Area, 12,210 square miles; seacoast, 33 miles.

Baltimore, the metropolis; laid out in 1730; has regular lines European steamers; is one of the healthiest cities on the globe; excellent drainage; population, 1887, 450,000. The capital, Annapolis, contains United States Naval Academy; population, 7800.

The depot of western mining region is Cumberland; population, 13,000.

Average value per acre of farms, \$24.05; woodland, \$35.50.

Wheat crop, 1884, 8,230,000 bushels; corn, 15,237,000 bushels; tobacco, 31,570,793 lbs.

Annual value principal orchard products:—Peaches, pears, plums and apples, nearly \$2,000,000; canned and preserved fruits and vegetables, over \$2,000,000; oyster fisheries, nearly \$5,000,000.

Number manufacturing establishments, 6787; capital invested, \$59,000,000; hands employed, 74,945.

Salaries of State Officials:—Governor, \$4500; Secretary of State, \$2000; Treasurer, \$2500; Comptroller, \$2500; Attorney-General, \$3000; Chief Justice, \$3500; 7 Associate Justices, \$3500; District Judge, \$4000; Senators and Representatives, \$5.00 per day and mileage; Collector of Customs, \$7000; Naval Officer, \$5000; Surveyor, \$4500.

Presidential Post-Offices:—Annapolis, \$2400; Baltimore, \$5000; Cumberland, \$2300; Easton, \$1700; Elkton, \$1500; Frederick, \$2200; Hagerstown, \$2300.

Number electoral votes, 8.

Insane, convicts and bribers excluded from all voting.

Legal interest rate, 6; usury forfeits excess of interest.

WELSH & BRO.

(LATE OF CANFIELD, BRO. & CO.)

5 E. Baltimore St.

WATCHES, DIAMONDS,

JEWELRY, SILVER

AND PLATED WARE.

SWAYNE & CO.

205 & 207 N. Charles St.

Fine Fancy Goods and Jewelry,

FANS, BISQUE, BRIG-A-BRAC,

Solid Gold and Gold-Plated Jewelry

JEWELERS—WHOLESALE.

KOHNER MAX.

7 S. Charles St.

Wholesale Dealer in

Elgin & Waltham Watches

GOLD AND PLATED JEWELRY,

EYE-GLASSES, SPECTACLES, &c.

See page 74.

OPPENHEIMER D. & BRO.

121 W. Baltimore St. (Old 283).

WHOLESALE

JEWELRY & WATCHES.

LEAD MANUFACTURERS.

PIPE AND SHEET LEAD.

ROBERTSON JAS. & CO.

Office, 17 S. Charles Street.
Works, 827 S. Howard Street.

SHEET LEAD, LEAD PIPE.

Plumbers', Gas and Steam Fitters'

SUPPLIES AND TOOLS.

NORTH CAROLINA.



One of the thirteen original States; discovered by Lord Raleigh 1584; settled by English, at Albemarle, 1650.

Area, 52,250 square miles: coast line over 400 miles: area Dismal Swamp, 150,000 acres: number counties, 96.

Wilmington, principal seaport and chief city: population, 22,000; is the greatest market in the world for naval stores.

Raleigh, "the City of Oaks," capital, and contains the State institutions; population, 14,000.

Charlotte, the depot of the gold district, contains the assay office, which determines the fineness, weight and value of the precious metal.

Average value per acre of farms, \$9.77; woodland, \$5.53.

Agriculture the leading industry: corn the most valuable crop; tobacco the leading product.

Ranks first in tar and turpentine, third in tobacco.

Salaries of State Officials:—Governor, \$3000; Secretary of State, \$2000; Treasurer, \$3000; Attorney-General, \$2000; Chief Justice, \$2500; 2 Associate Justices, \$2500; Senators and Representatives, \$4.00 a day and mileage.

Presidential Post-Offices:—Charlotte, \$2400; Durham, \$1600; New Berne, \$1900; Raleigh, \$2600; Wilmington, \$2600; Winston, \$1800.

Number electoral votes, 11.

Convicts excluded from voting.

Legal interest rate, 6; by contract, 8.

HAY GEO. M.

TEXAS.
ALUM AND
VIRGINIA LIME.

IMPORTER

12 and 14 N. Greene Street.

GERMAN PORTLAND CEMENT.

PLEMPEL & SON.

— L I M E, —

PORTLAND * CEMENT, * HAIR,
BRICKS,

301 McElderry's Wharf.

Land and Calcined Plaster, Drain Pipes, &c

LIQUORS AND WINES.

BRUCE EDW. B. & CO.

IMPORTERS OF

+ WINES, &c. +
DISTILLERS

306 Exchange Place.

And Curers of Rye & Bourbon Whiskeys.

DARRELL CHARLES & CO.

WINES AND SPIRITS.

116 Commerce St.

WILLIAMS Z. F.

DRUG BROKER

AND HANDLER OF

LIQUORS AS MEDICINE ONLY.

42 S. Charles St.

ONLY FOR THE DRUG TRADE.

See article on pages 12, 14 and 16.

SOUTH CAROLINA.



One of the thirteen original States; first permanent settlement made by English, at Port Royal, 1670; famous nullification troubles occurred 1832-33, led by J. C. Calhoun.

Area, 30,170 square miles; extreme length, 275 miles; greatest breadth, 210 miles.

Charleston, first rice-market in the United States, is the largest city; laid out in 1680; population, 50,000; port of entry. U. S. customs districts at Beaufort, Charleston and Georgetown.

Aiken is a favorite winter resort for invalids.

First railroad to use American locomotives, the South Carolina, built 1830-33.

Average value per acre of farms, \$6.24; woodland, \$8.64.

State noted for its rice, sea-island cotton and palmettoes. Ranks first in phosphates.

Gold mines in Abbeville, Edgefield and Union Counties.

White and variegated marbles found in Spartanburg and Laurens Counties.

Salaries of State Officials:—Governor, \$3500; Secretary of State, \$2100; Treasurer, \$2100; Attorney-General, \$2100; Chief Justice, \$4000; Associate Justices, \$3500; Senators and Representatives, \$5.00 per day and mileage.

Presidential Post-Offices:—Aiken, \$1600; Beaufort, \$1400; Charleston, \$3200; Columbia, \$2500; Greenville C. H., \$2000; Spartanburg C. H., \$1800; Winnsborough, \$1200.

Number electoral votes, 9.

Insane, inmates of asylums, almshouses and prisons, U. S. army and duelists excluded from voting.

Legal interest rate, 7; by contract, any rate.

BASSHOR THOS. C. & CO.

28 Light Street.

MACHINERY

OF ALL KINDS.

STEAM and WATER

HEATING.

—AGENTS FOR—

Dugan Cumberland & Co.

30 S. Charles St.

WOOD AND IRON MACHINERY,
Leather and Rubber Belting,
ENGINES AND BOILERS,
Lathes, Planers, Drills, Steam Pumps, Wrought-
Iron Pipes, Boiler Flues, etc.

REUTER & MALLORY.

22 Light Street.

RAILROAD,

MACHINISTS'

AND

MANUFACTURERS'

SUPPLIES.

MACHINISTS.

SEE ALSO BOILER MAKERS.

CODD E. J. & CO.

702 to 708 S. Caroline Street.

FOUNDRY, MACHINE

—AND—

BOILER WORKS

ENGINES, BOILERS,

Shafting, Pulleys, Etc.

DETRICK & HARVEY.

Preston St. and Jones Falls.

The Open Side Iron Planer

FOR LONG & EXTRA-WIDE WORK.

Fine and Special Machinery

Send for Catalogue.

ELLERBROCK & FADUM.

408 German St., above Eutaw.

ENGINEERS.

Machinery of all kinds Built and Repaired.

MODELS

Steam Pumps, Steam and Water Fittings, etc.

Special attention paid to Steam Pumps.

VIRGINIA.



One of the thirteen original States: named in honor of Elizabeth, the Virgin Queen; settled by English, at Jamestown, 1607.

Area, 42,450 square miles: coast line about 120 miles, or tidal frontage 1500 miles.

Richmond, capital and metropolis: population, 63,803.

Hampton Roads is one of the best harbors on Atlantic Coast: has seven ports of entry.

Average value per acre of farms, \$9.42; woodland, \$7.48.

Marble quarried on Potomac. Number sandstone quarries, 10; ship-building establishments, 65; saw mills, 907; flour and grist mills, 1385.

Gold produced, 1882, \$15,000; iron, zinc and lead also produced.

Ranks first in peanuts, second in tobacco, eighth in salt and iron ore.

Salaries of State Officials:—Governor, \$5000; Secretary of State, \$2000; Treasurer, \$2000; Auditor, \$3000; Attorney-General, \$2500; President Supreme Court, \$3250; 4 Judges Supreme Court, \$3000; Senators and Representatives, \$540 per annum.

Presidential Post-Offices:—Alexandria, \$2400; Danville, \$2400; Lynchburg, \$2800; Norfolk, \$3100; Petersburg, \$2600; Richmond, \$3400.

Number electoral votes, 12.

Lunatics, convicts, duelists, U. S. army and non-taxpayers of capitation tax excluded from voting.

Legal interest, 6; by contract, 8; usury forfeits excess over 6 per cent.

FRANK ERNEST & SON. ENGINE *and* MACHINE MANUFACTURING
WORKS.

642 & 644 W. Pratt St.

BOILER MAKERS, SMITHWRIGHTS, &c.

LARRABEE H. C. & CO. ENGINEERS
→*AND*←
IRON FOUNDERS.

Caroline & Lancaster Sts.

MARQUETTE JOHN N. ENGINEER *and* MACHINIST.
Distillery, Bake-House and Mill Work.
SHAFTING, HANGERS, CASTINGS
OF EVERY DESCRIPTION TO ORDER.
Millwright Work Attended to Promptly.

118 West Falls Ave.

MURRAY JAMES & SON. MACHINISTS & MILLWRIGHTS.
MARINE RAILWAY, PHOSPHATE MACHIN-
ERY, DAVID'S DISINTEGRATORS
AND BONE MILLS.
Improved Clay Tempering Machinery, Steam
or Horse Power.

(ESTABLISHED 1837.)

102-108 York Street.

MURRILL & KEIZER. MACHINISTS
AND
Manufacturers of Light Machinery
DAMPER REGULATORS,
PATTERNS AND MODELS.

200-204 N. Holliday St.

PAGE GEO. & CO. MACHINISTS
AND
FOUNDERS.

14 N. Schroeder St.

POOLE & HUNT. MACHINE-MOULDED
MILL, GEARING,
GENERAL MACHINERY.

233 E. German St.

WEST VIRGINIA.



“Pan-Handle State.” Composed of northern and western counties of the original State of Virginia. Became a State in 1863.

Area, 24,780 square miles; greatest length, north and south, about 240 miles; greatest breadth, 160 miles.

Charleston, capital; is the depot for salt, coal and iron regions; population, 4192.

Wheeling, metropolis; principal seat of manufactures, and port of delivery; population, 31,266.

Parkersburg is the shipping point for the petroleum district; population, 9000.

Average value per acre of farms, \$21.05; woodland, \$9.39.

Staples are tobacco, wheat and corn, the last being the most valuable crop. Iron ore yields 50 to 80 per cent. pure metal; latest amount reported, 61,216 tons; coal, 1,792,570 tons; salt, 2,679,438 bushels.

Petroleum is extensively produced in Ritchie, Pleasants, Wood and Wirt Counties.

Salaries of State Officials:—Governor, \$2700; Secretary of State, \$1000; Treasurer, \$1100; Attorney-General, \$1000; Judge Supreme Court, \$2250; Associate Judges, \$2250; Senators and Representatives, \$4.00 per day and mileage 10 cents.

Presidential Post-Offices:—Charleston, \$2100; Charlestown, \$1500; Parkersburg, \$2300; Piedmont, \$1300; Wheeling, \$3000.

Number electoral votes, 6.

Insane, paupers and convicts excluded from voting.

Legal interest, 6; by contract, 6; usury forfeits excess of interest.

POOLE & HUNT.

MANUFACTURERS OF

Turbine Water Wheels,

233 E. German St.

ENGINES, BOILERS, ETC.

POOLE & HUNT.

MANUFACTURERS

Light and Heavy Shafting,

233 E. German St.

PULLEYS, ETC.

STEVENSON & PLUNKETT.

ENGINEERS AND MACHINISTS.

Stationary and Hoisting Engines,
Pulleys, Shafting, Hangers, &c.
Presses, Dies, Can-Makers' and Packers'
Machinery, &c.

229 N. Holliday St.

Drawings and Estimates of all kinds of
Machinery.

MANTELS, TILES, Etc.

SEE ALSO MARBLE AND STONE WORKERS.

BEVAN & SONS.

MONUMENTS,

TOMBSTONES, MANTELS, TILES, &c.

227 W. Saratoga St.

Building Marble and Brownstone.

RIDDLE & WILLIAMS.

IMPORTED AND AMERICAN TILES.

Marble, Slate and Wood Mantels.

124 N. Howard St.

Grates, Fire-place Appurtenances, &c.

SISSON HUGH & SONS.

STEAM MARBLE WORKS.

MANTELS and TILES,

Furniture Slabs Altars, &c.

North & Monument Sts.

MONUMENTS AND TOMBSTONES.

THE RED **C** OIL MFG. CO.

PETROLEUM PRODUCTS.

All Grades of Burning, Lubricating, Machinery Oils and Greases. Benzine.

Oils of all kinds for burning and lubricating purposes.

WARRANTED TO STAND A FIRST TEST OF 150 DEG. GRAVITY 49 DEG.

WHITE OIL

WARRANTED TO STAND A FIRST TEST OF 150 DEG. GRAVITY 49 DEG. MANF'G. CO. BALTIMORE.

RED OIL

No. 40 S. Calvert St. Baltimore.

Manufacturing Purposes.

Locomotive, Engine, Cylinder, Spindle, Animal and Fish Oils, Gasolines.

PROPRIETORS OF THE CELEBRATED

* RED **C** OIL *

THE VERY HIGHEST GRADE OF ILLUMINATING OIL.

See page 132.

BEVAN & SONS.

227 W. Saratoga St.

BUILDING WORK IN
MARBLE
AND
BROWNSTONE.

Monuments, Tombstones, Mantels, Tiles, &c.

SISSON HUGH & SONS.

North and Monument Sts.

MARBLE
AND
BROWNSTONE,
CEMETERY CURBING, Etc.
GENERAL MARBLE AND STONE WORK.

SISSON HUGH & SONS.

North and Monument Sts.

MONUMENTS, TOMBS,
Altars, Mantels, Tiles, Etc.
Church, Special Work, Special Designs.

MILITARY AND SOCIETY GOODS.

GMINDER JACOB.

14 S. Calvert St.

IMPORTER AND MANUFACTURER
MILITARY and SOCIETY GOODS,
Embroidered and Metallic Ornaments,
LETTERS, FIGURES, ETC.
Gold and Silver Laces, Fringes and Tassels.

MILL FURNISHINGS.

STARR B. F. & CO.

North and Centre Sts.

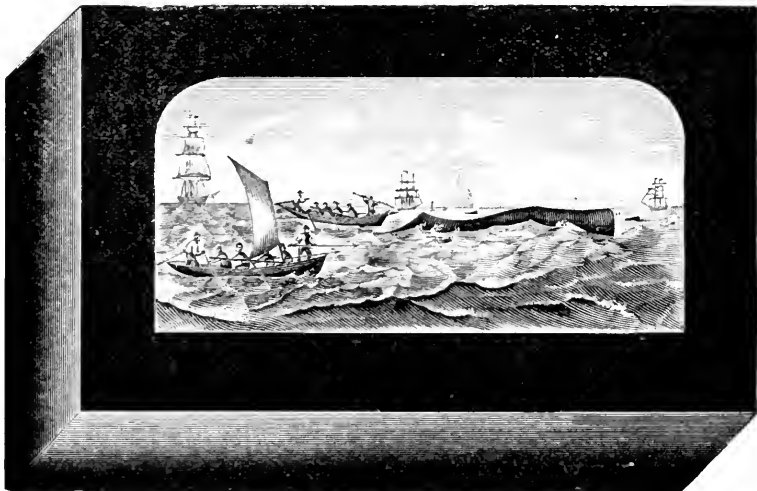
MANUFACTURERS
MILL STONES
—AND—
MILL MACHINERY.

The Oldest Oil House in the City. Business Established 1832 (on Present Premises).

WM. C. ROBINSON & SON.

217 SOUTH STREET, BALTIMORE, MD.

Manufacturers and Wholesale Dealers in **OILS.**



Specialties: Oils for Cotton and Woolen Mills, Railroads, Tanners
AND MACHINERY USE.

Our Colophine Cylinder Oil is the best in use: 650° fire test, 28° gravity. Perfect Engine Oil: 600° fire test, 20° gravity. Colophine Engine Oil: 556° fire test, 23° gravity.

ELAIN, LANA AND OVEJA WOOL OILS.

FOR TANNERS' USE.—N. F. AND LAB. COD, STRAITS, BANK,
AND STUFFING OILS.

Also Sperm, Whale, Lard, Signal, Lubricating, Cotton-Seed, Fish, Paraffine, and all other

❧ **OILS** ❧

(Correspondence Solicited.)

See page 130.

RITTER S. W. MILLWRIGHT.

—BUILDER OF—

Flour & Saw Mills, Fertilizer & Chemical Works,
Portable Mills, Smut Machines, Etc.

708 S. Caroline St.

—GENERAL MILL SUPPLIES.—

NOTIONS AND FANCY GOODS.

JOHNSON, BOYD & CO. IMPORTERS AND JOBBERS OF
HOSIERY, & NOTIONS,

—WHITE GOODS—

AND

GENTS' FURNISHINGS.

3 Hanover Street.

MILLER DANIEL & CO.

—WHOLESALE—

NOTIONS

—AND—

→ DRY & GOODS ←

28 & 30 Hopkins Place.

Sole Agents for Diamond Dress Shirts.

OIL DEALERS AND REFINERS.

JOHNS HOPKINS OIL CO.

SPECIALTIES IN HIGH-FIRE-TEST

CYLINDER

—AND—

MACHINERY OILS.

121 Commerce Street.

Also 24 & 26 N. Water St., Phila.

MACNEAL JAS. B. & CO.

OILS,

GREASE,

ALCOHOLS.

34 S. Calvert Street.

See page 102.

TOUGH, RUTHERFORD & CO.

BALTIMORE.

MANUFACTURERS OF
SPECIAL BRANDS OF **OILS.**

ENGINE LARDENE OIL,
SPERM CYLINDER OIL,
LARDENE MACHINERY OIL,

—FOR—

Spindles, Engines and Heavy Machinery

CYLINDERS.

Wool Oils, Tanners' Oils, Sperm, Whale and Lard Oils.

CAR AND WAGON GREASES.

MILNOR WALTER S. & CO.SOLE PROPRIETORS OF
THE + CRESCENT + OIL + CO.
REFINERS AND JOBBERS OF OILS

124 S. Calvert Street.

Of Every Description.

PEERLESS OIL COMPANY.MANUFACTURERS OF
MACHINERY,
ENGINE AND
CYLINDER

425 Hughes Street.

—OILS—

OFFICE OF WAITE & BRENNAN.

Red (The) "C" Oil Mfg. Co.

OILS

OUR SPECIALTY:

THE CELEBRATED RED "C" OIL.

Beware of Imitations.

40 S. Calvert St.

See pages 96 and 132.

ROBINSON WM. C. & SON.

ESTABLISHED 1832.

OILS

The Oldest Oil House in Baltimore.

217 South Street.

See pages 98 and 130.

SMITH THOMAS M.Raw Linseed Oil,
Boiled Linseed Oil,
Double-Boiled Linseed Oil.

Smith's Wharf.

My Oil is Strictly Kettle-boiled.

Tough, Rutherford & Co.

OILS

—AND—

OIL TANKS.

13 E. Lombard St.

See pages 100 and 126.

WEST C. & SONS.MANUFACTURERS OF
"OUR ÷ HOME" ÷ SAFETY ÷ OIL.

(Established 1838.)

Spring Water White, over 150 deg. Fire Test.
Royal Red Safety Oil (Crown Brand).
RUBY Red, 150 deg. Fire Test.
West's Extra No. 1 Kerosene Oil.
Lard, Whale, Sperm, Tanners' and Neat's-foot
Oils. Axle Grease, Engine, Machinery and Lubri-
cating Oils.

18 E. Lombard Street.

JAS. B. MACNEAL & CO.

Manufacturers of and Dealers in

BURNING, MACHINERY AND ANIMAL

❖ **OILS** ❖

OF ALL GRADES, COLOR AND QUALITY,
FOR MILLS, RAILROADS, ETC.

*RED OILS, GASOLINES, AXLE GREASE, OIL
TANKS, BUNGS, CHIMNEYS, BURNERS
AND WICKS.*

PURE GRAIN
ALCOHOL, COLOGNE AND PROOF SPIRITS.

WOOD ALCOHOL and ALCHOLENE.

34 SOUTH CALVERT STREET,
BALTIMORE.

 OFFICE: RUBBER PAINT COMPANY,
Manufacturers of RUBBER ROOFING PAINT.

SEND FOR CIRCULARS.

WHITE W. M. G. DEALER IN ALL KINDS OF
Illuminating, Machinery and Animal
OILS,
GASOLINE OF ALL GRAVITIES.
726 E. Pratt St. AXLE GREASE AND LAMP CHIMNEYS.

WILLIAMS Z. F. WILLIAMS'
LUBRIPHENE
MACHINERY OILS,
42 S. Charles St. EQUAL TO LARD OIL, AT HALF ITS PRICE
See page 104.

WILLIAMS Z. F. ESTABLISHED 1871.
BROKER IN OILS.
LARD, TANNERS', SPERM,
W. VA. LUBRICATING,
PARAFFINE, MINERS', WOOL,
NEAT'S FOOT, LINSEED,
CYLINDER, AND ALL OTHER OILS.
42 S. Charles St. See pages 108 and 114.

OPTICIANS.

SADTLER G. T. & SONS. ESTABLISHED 1800.
OPTICIANS.
16 E. Baltimore St.

PAINT MANUFACTURERS.

Baltimore Enamel Paint Co. READY-MIXED PAINTS,
ALL SHADES.
UNSURPASSED FOR DURABILITY.
GIVES UNIVERSAL SATISFACTION.
Smith's Wharf. PUTTY A SPECIALTY.

WILLIAMS'

LUBRIPHENE

TRADE MARK

MACHINERY OILS.

EQUAL TO LARD OIL, AT HALF THE COST.

*GUARANTEED TO PLEASE. FREE FROM DIRT.
FREE FROM ACID. KEEPS BEARINGS COOL.*

TRY LUBRIPHENE OIL. Parties are pleased with it who were never SUITED BEFORE.

OILS of all kinds, grades and prices.

Z. F. WILLIAMS, 42 S. Charles St., Baltimore.

ESTABLISHED 1871.

SEND FOR PRICES.

See pages 108 and 114.

Decorative Art Emporium
HIRSHBERG, HOLLANDER & CO.
 N. W. COR. PRATT & HANOVER STS.

IMPORTERS AND DEALERS IN

Artists Materials - Oil - China - Water and
 Tambourines - Tiles - Glazed and
 Palettes - Holly - Wood - Ornaments
 Drawing Papers
 Artists Fine Brushes - Studies - India Inks
 Art Novelties - Etc.

Toy Colors - Wax Flower Materials -
 Unglazed Vases - Terraline Vases
 Scholars' Outfits - Mathematical Instruments
 Beveled Mirrors
 Crayons - Drawing Boards - Panels

HIRSHBERG, HOLLANDER & CO. N. W. COR. PRATT & HANOVER STS. BALTIMORE, MD.




See page 106.

BOLTON HUGH & CO.

207 & 209 McElderry's Whf.

ESTABLISHED 1798.

MANUFACTURERS OF

READY-MIXED PAINTS
AND
PAINTS IN OIL.

Hirshberg, Hollander & Co.

106-110 W. Pratt St.

Ready-Mixed Paints

Star and Mystery

BRANDS

See pages 104 and 106.

MCCREARY J. A. & CO.

23 S. Charles St.

MANUFACTURERS OF

*Lampblacks, Venetian Red,
Spanish Brown, Point Black,
Metallic Brown, Putty, Etc.*

POPPLEIN G. & N., JR.

Hanover & Lombard Sts.

MANUFACTURERS OF

Ready-Mixed Paints,
READY FOR USE.
PAINTS, DRY AND IN OIL.

PAINT MANUFACTURERS—ROOFING.

ROBINSON E. W.

368 Boundary Avenue.

MANUFACTURER OF
THE HAWTHORN

Excelsior Roofing Paint.

See page 72.

RUBBER PAINT COMPANY.

34 S. Calvert Street.

RUBBER
ROOFING
PAINT.

See page 102.

HIRSHBERG, HOLLANDER & CO.
 195-197-217-240 W. Pratt St.
BALTIMORE
 Manufacturers of
READY MIXED PAINTS
 Sample Cards of 64 Desirable Shades
 sent on application.

MOLLIS OIL. + + +
 The Best Oil for Machine Use.

+ + **ACME HARNESS OIL,**
 The Best Oil for Leather Use.

**BRILLIANT
 GOLD PAINT.**

Jobbers of
 Kalsomine Colors, Brushes, Glues,
 PAINTERS AND ARTISTS SUPPLIES.
 Oils, Glass, Varnishes.

We carry the largest and most
 complete line of goods pertaining
 to our line of business in the city.

SAMPLE CARDS AND CATALOGUES
 → SENT UPON APPLICATION ←

Hirshberg, Hollander & Co.
 195-197-217-240 W. Pratt St.
BALTIMORE, M.D.

THE

LARGEST PAINT ESTABLISHMENT IN BALTIMORE.

LARGEST STOCK,	}	OF GOODS IN THE LINE,
BEST ASSORTMENT,		BOTH
GREATEST VARIETY		FOREIGN & DOMESTIC.

New Nos. 106 to 110 W. PRATT ST.,

BAKER BROTHERS & CO.

36 & 38 S. Charles St.

DEALERS IN

Paints, Oils, Chemicals, Etc.

MANUFACTURERS OF

WINDOW GLASS AND GLASSWARE.

BERRY BROTHERS.

22 E. Lombard St.

MANUFACTURERS OF

* VARNISHES *
AND THE ONLY GENUINE
CELEBRATED
HARD-OIL FINISH.

FACTORIES: DETROIT, MICHIGAN.

ESTABLISHED 1798.

BOLTON HUGH & CO.

207 & 209 McElderry's Whf.

MANUFACTURERS AND DEALERS IN

GLASS, OILS, PAINTS

AND

NAVAL STORES.

DODGE GEO. R. & CO.

608 E. Baltimore St.

PAINTS, OILS,
COACH AND
OIL COLORS,
AND FINE
VARNISHES.

Hirshberg, Hollander & Co.

106-110 W. Pratt St.

PAINTS

—AND—

PAINTERS' ♦ SUPPLIES

OF ALL KINDS.

See pages 104 and 106.

KING WM. & BRO.

No. 2 N. Liberty St.

AGENTS FOR

* RUBBER ♦ PAINT ♦ COMPANY *

AND MANUFACTURERS OF

WINDOW GLASS.

POPPELAIN G. & N., JR.

Hanover and Lombard Sts.

MANUFACTURERS OF

Paints, Dry and in Oil,
Ready-Mixed Paints,
Sand and Emery Papers, etc.

ESTABLISHED 1871.

Z. F. WILLIAMS,

42 SOUTH CHARLES ST., BALTIMORE,

Broker, Importer, Manufacturer

Window Glass, Paints,
Varnishes, Glue, Etc.

BRUSHES OF ALL KINDS.

OILS of all Grades and Prices.

CORRESPONDENCE SOLICITED.

See pages 104 and 114.

DON'T READ THIS!!

CHAS. W. LOGAN'S

& Choice × Flavoring × Extracts &

Vanilla, Lemon, Rose, Orange, Almond, Strawberry, Etc., Etc.,

ARE THE VERY BEST.

THEY GIVE UNIVERSAL SATISFACTION.

People Say: "WE WILL NEVER USE ANY OTHER."

MANUFACTURED BY

E. & S. FREY,

314 WEST BALTIMORE ST. - - BALTIMORE.

Ask Your Grocer for them. For sale in bulk to Hotels, Ice Cream
Manufacturers, Etc.

See page 46.

POPPLEIN G. & N., JR. MANUFACTURERS OF
PAINTS, COLORS,
DRY AND IN OIL.
 Hanover and Lombard Sts. Sand and Emery Papers, etc.

SEIM HENRY & CO. *PAINTS, OILS, VARNISHES,*
WHITE LEAD, Etc.
 Howard and Fayette Sts. **ASPHALTUM READY-MIXED PAINT.**
 Manufacturers of WINDOW GLASS.

SWINDELL BROS. MANUFACTURERS OF
Baltimore + Window + Glass. +
 — ALSO —
BOTTLE WARE.
 10 E. Lombard St. See pages 68 and 130.

WILLIAMS Z. F. BROKER IN
PAINTS, GLUES,
BRUSHES, VARNISHES,
 — AND —
 42 S. Charles St. Painters' Supplies of all kinds.
 See page 108.

WILLIAMS Z. F. BROKER IN
WINDO \diamond WGLASS \diamond
 OILS OF EVERY KIND,
CHEMICALS, ETC.
 42 S. Charles St. See page 108.

PAPER BAGS, Etc.

DUSHANE JOHN A. & CO. "UNION" STANDARD
 AND
 SPECIAL
MANILLA and WRAPPING.
 40-44 S. Charles St. See pages 112 and 142.

JACOB MYERS,

Manufacturer, Wholesale and Retail Dealer in

WALL PAPERS

WINDOW SHADES, ETC.,

No. 123 (Old No. 39) North Gay St.,

OPPOSITE ODD-FELLOWS' HALL,

BALTIMORE, MD.

Has no Connection or Branch House in the City.

WORK DONE IN THE STATES AT CITY PRICES,
BY CAREFUL WORKMEN.

SAMPLES BY MAIL ON APPLICATION.

DENNIS B. M. & CO. PAPER HANGINGS,

ALL STYLES AND DESIGNS.

340 N. Charles St.

Fine Work a Specialty.

MYERS JACOB.

Manufacturer, Wholesale & Retail Dealer in

WALL PAPERS,

✦ WINDOW SHADES, ETC. ✦

123 N. Gay St. (Old No. 39).

See page 110.

PAPER MANUFACTURERS.

DUSHANE JOHN A. & CO.

MANUFACTURERS OF

BOOK, NEWS

—AND—

WRAPPING & PAPERS.**40-44 S. Charles Street.**

See pages 112 and 142.

PAPER STOCK, OLD METALS, Etc.

ASH MICHAEL I.

DEALER IN

Cotton Pickings, Fish Sounds,

PAPER STOCK AND METALS.

308 Light-Street Wharf.

PIECED COTTON TIES.

BRODERICK BROS.

DEALERS IN

Cotton & Woolen Rags,

PAPER STOCK,

608-614 W. Pratt St.**METALS, ETC.**

PAPER! PAPER!! PAPER!!!

JOHN A. DUSHANE & CO.

40-44 S. CHARLES ST., BALTIMORE.

BOOK, NEWS, WRITING,
WRAPPING, PRINTING,
AND EVERY OTHER KIND OF PAPER,

ADAPTED TO ALL USES, ON HAND OR MADE TO
ORDER.

AGENTS FOR

Crane Bros.' "All Linen," Japanese, and Linen Ledger Papers.
Crane & Co.'s Bond and Bank-Note Papers.

HARDWARE AND CLOTH PAPERS, PARCHMENT WATER-
PROOF PAPERS, WHITE AND COLORED TISSUE
PAPERS, MANILLA TISSUE PAPERS, CARD
BOARDS AND BINDERS' BOARDS,
PAPER BAGS, FLOUR SACKS, WAX PAPER, ENVELOPES,
TAGS, Etc., Etc.

(The Paper in this Book was made by this Firm.)

See page 142.

DUBEL JAMES E.

DEALER IN

Cotton Pickings,
—WOOL—

325 McElderry's Wharf.

PAPER STOCK, METALS, &c.

MENTZEL HENRY D. & CO.

BUY OLD BOOKS,
PAMPHLETS, NEWSPAPERS
AND WASTE PAPER.

119 Mercer St., near Calvert.

At Market Rates for Cash.

PAPER WAREHOUSES.

DUSHANE JOHN A. & CO.

PAPER

OF EVERY DESCRIPTION ON HAND
AND MADE TO ORDER.

40-44 S. Charles Street.

See pages 112 and 142.

GLASS D. W. & CO.

A. S. P. CO.

PAPER,
ENVELOPES,
INKS.

Balto., Chicago, San Francisco.

PAPER GOODS GENERALLY.

RUDOLPH WILLIAM.

STRAW BOARD

—AND—

222 S. Charles St.

PAPER WAREHOUSE.

Z. F. WILLIAMS,

42 S. CHARLES STREET, BALTIMORE.

(Established 1871.)

BROKER, IMPORTER, MANUFACTURER

DRUGS AND DRUGGISTS' SPECIALTIES,

OOO **OILS** OOO

**WINDOW GLASS, BOTTLE WARE,
CHEMICALS, GLUES,**

PAINTS, BRUSHES, VARNISHES, Etc.

Correspondence Solicited.

See pages 64 and 104.

GILPIN, LANGDON & CO.

(Successors to CANBY, GILPIN & CO.),

Importers, Exporters and Jobbers of

DRUGS

BERNARD GILPIN,
THOMAS P. LANGDON,
HENRY B. GILPIN.

N. W. COR. LIGHT & LOMBARD STS.,

BALTIMORE.

New York Office, Corner Cedar and Pearl Streets.

See page 44.

HEINEKAMP WM. & SON.MANUFACTURERS OF
GRAND. SQUARE & UPRIGHT
Pianofortes.

Office, 6 E. Baltimore St.

And Dealers in

—ORGANS—

KNABE WM. & CO.**KNABE**22 & 24 E. Baltimore St., Balto.
112 Fifth Avenue, New York.
817 Penna. Avenue, Washington.GRAND, SQUARE & UPRIGHT
PIANOFORTES.
Have been before the Public for Fifty Years.
Also Agents for Smith American Organs.**STIEFF CHAS. M.****Stieff Pianos**

9 N. Liberty St.

GRAND, UPRIGHT & SQUARE.
Unsurpassed in
—TONE AND DURABILITY.—**PICTURE-FRAME MANUFACTURERS.****Hirshberg Bros. & Hollander.**Picture Frames,
Mirrors,
Mouldings,
Fancy Cabinet-ware, &c.

24 Hopkins Place.

23 Liberty Street.

LANDON & KENT.MANUFACTURERS OF
Mouldings & Picture Frames,
—CHROMOS—

Fremont & Pratt Sts.

AND FRAME-DEALERS' SUPPLIES.
Advertising Frames a Specialty.**MOORE JOHN A.**MANUFACTURER OF
Picture Frames, Mantel Mirrors,
Etc., Etc.

106 W. Lexington St.

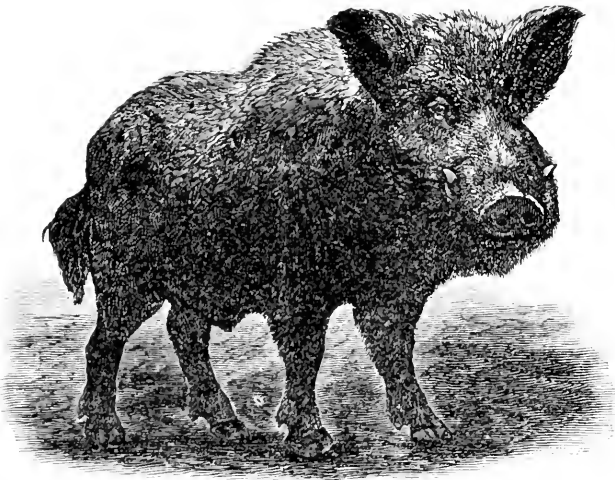
IMPORTER OF NOVELTIES
For Christmas and Bridal Presents.

SUPER & WYLIE,

Slaughterers and Curers

—OF—

→ FINE MEATS ←



—AND—

LARD RENDERERS,

12 & 14 N. Paca St. and 27 Calverton Ave.,

BALTIMORE.

DORMAN J. F. W. PRINTING PRESSES,
 —TYPE—
 Ribbon, Rubber and Steel Stamps,
 217 E. German St. STENCILS, CHECKS, &c.

PROVISIONS, Etc.

BUTLER CHAS. & SONS. WHOLESALE
 Provision Merchants
 121 Cheapside. *Bacon, Pork, Lard, Hams, Butter, and Provisions Generally.*

CASSARD G. & SON. PROVISIONS,
 LARD, ETC.
 517-525 W. Baltimore St.
 504-508 German Street. *See page 136.*

HARVEY W. P. & CO. BACON,
 PORK,
 LARD, &c.
 Exchange Place & Commerce St. *See pages 20 and 134*

SUPER & WYLIE. →‡ MEATS ‡←
 12 & 14 N. Paca Street.
 27 Calverton Avenue. LARD REFINERS, ETC.
See page 116.

See article on pages 38, 40 and 42.



Baltimore City Hall.

THIS IS THE ONLY PUBLIC BUILDING
IN THE
UNITED STATES
EVER BUILT FOR LESS THAN THE ORIGINAL APPROPRIATION.
WHEN FINISHED AND FURNISHED,
OUT OF \$2,500,000—\$228,864.36 WAS RETURNED.

ARMIGER R. & SON. REFRIGERATOR

—MANUFACTURERS.—

7 E. Lombard St., near Charles.

Send for Catalogue.

RUBBER GOODS.

JANNEY & CONGDON.

WHOLESALE and RETAIL
GOODYEAR'S

RUBBER

12 N. Charles St.

GOODS.

THOMAS GEORGE P. JR.

Goodyear's Rubber Fabrics

—AND—

MECHANICAL GOODS.

Baltimore & Charles Sts.

Leather Belting & Sporting Goods.

SADDLES, HARNESS, Etc.

BERGMAN MFG. CO.

Carriers and Manufacturers of

Leather, Saddles,

Harness, Collars,

and Saddlery.

215 & 217 W. Pratt St.

DAY O. F., SON & CO.

MANUFACTURERS OF

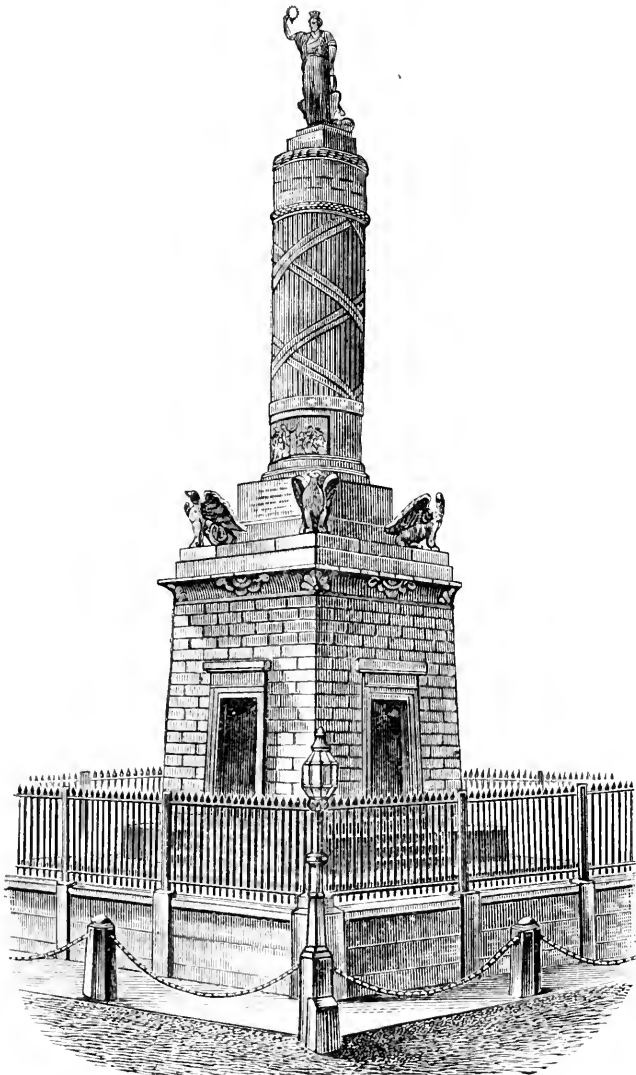
Saddlery,

Harness, Collars,

Trunks, Etc.

(Successors to DAY, JONES & Co.),

32 W. Baltimore St. op. Hanover.



The Battle Monument

ERECTED BY THE PEOPLE OF BALTIMORE
TO HER CITIZENS
WHO FELL IN HER DEFENCE
AGAINST THE BRITISH,
IN THE BATTLE OF NORTH POINT
AND THE
BOMBARDMENT OF FORT McHENRY,
ON
SEPTEMBER 12 AND 13, 1814.

LERCH BROTHERS.

 SADDLES, HARNESS,
 COLLARS, TRUNKS,
 SACHELS

—AND—

7, 9 & 11 E. Pratt St.

SADDLERY HARDWARE.

The Geo. N. Mackenzie Co.

ESTABLISHED 1790.

→*SADDLERY HARDWARE*←

 HARNESS, SADDLES,
 COLLARS, TRUNKS,
 BAGS AND SACHELS.

22 S. Charles St.

SALT.

KERR ALEX. BRO. & CO.

ESTABLISHED 1849.

Importers and Wholesale Dealers in Liverpool
and Turk's Island

—SALT—

303 E. Lombard St., Exchange Pl.

German Potash Salt or KAINIT. Also Proprietors
Kerr Salt Co., Rock Glen, N. Y.

SCALES.

MARDEN JESSE.

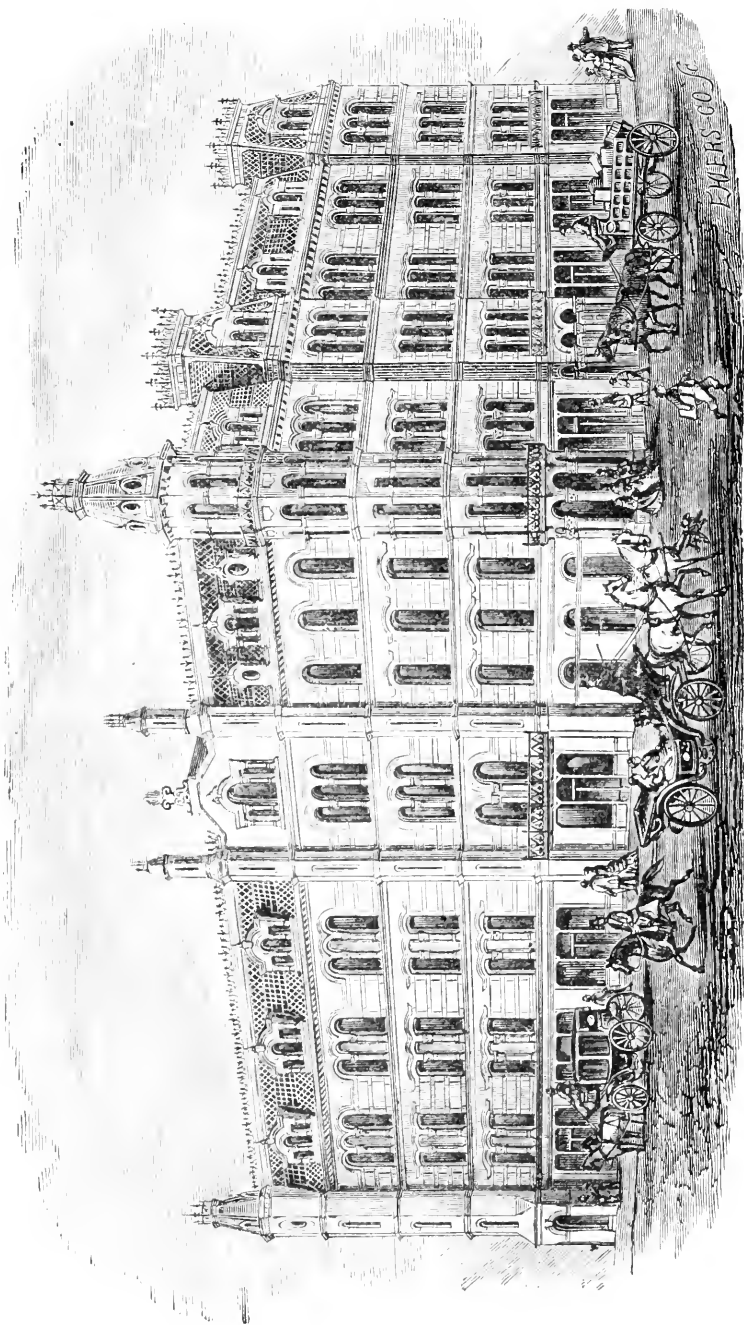
MANUFACTURER OF

SCALES

Charles & Balderston Sts.

OF EVERY DESCRIPTION.

 See article on pages 58 and 60.



Young Men's Christian Association, Baltimore.

RUSSELL, GIESE & CO.

▷GRASS SEEDS▷

—PEAS—

SEED OATS, RYE, WHEAT,
CORN, ETC.

18, 19, 20 & 21 Spear's Wharf.

TOWNSEND SAM'L & SON.

WHOLESALE DEALERS IN

SEEDS.

104 S. Charles St.

CANADA PEAS A SPECIALTY.

WHITMAN E., SON & CO.

GARDEN

AND FIELD

SEEDS.

27 E. Pratt Street.

WILLIAMS Z. F.

BROKER

IN ALL KINDS OF GRASS

▷*SEEDS*◀

42 S. Charles Street.

SEED POTATOES.

WILLIAMS Z. F.

SEED & POTATOES,

ALL VARIETIES.

PURE STOCK—LARGEST YIELDS.

42 S. Charles Street.

ALSO GRASS SEEDS.

SEWING MACHINES.

LELAND H. S.

THE NEW HOWE

SEWING MACHINES.

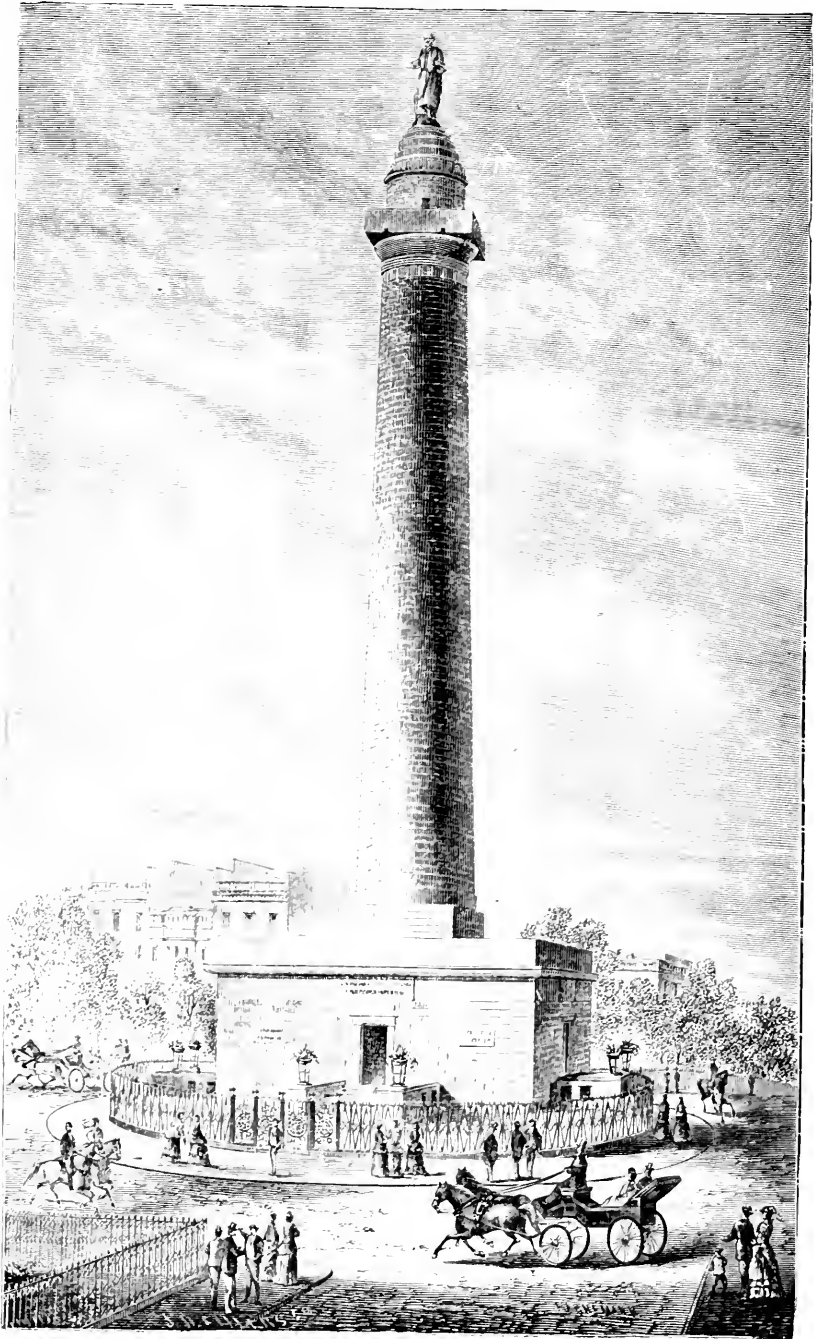
(Manufacturers' Agent),

THE "G" FOR FAMILY USE, ETC.

THE "D" FOR LEATHER WORK, ETC.

112 W. Lexington St.

Correspondence Solicited.



Washington Monument.

TO GEORGE WASHINGTON, BY THE PEOPLE OF MARYLAND, 1814.

This cut was kindly furnished by Geo. W. Howard, Esq.,
Publisher of "The Monumental City."

Merchants' Shot-Tower Co.

MANUFACTURERS OF
PATENT DROP, CHILLED AND MOULD

—SHOT—

—AND—

BAR LEAD.

Front and Fayette Sts.

ROBERTSON JAMES & CO.

MANUFACTURERS OF

‡ SHOT ‡

BAR LEAD, ETC.

Office & Store, 17 S. Charles St.
Works, 827 S. Howard Street.

SHOWCASES.

R. SAUER M'FG COMPANY.

SHOWCASES,

CURTAIN POLES,

STORE, BANK, OFFICE AND WINDOW FIXTURES

Eutaw and German Sts.

The most extensive Works of its kind in the
Country.

SNUFF MANUFACTURERS.

GAIL G. W. & AX.

Manufacturers of all kinds of

SNUFF—

SMOKING AND FINE-CUT CHEWING

Charles and Barre Sts.

—‡TOBACCO.

See article on pages 12, 14 and 16.

TOUGH, RUTHERFORD & CO.

BALTIMORE,

MANUFACTURERS OF THE

CELEBRATED CARDINAL
RED OIL!

The Best Illuminating
Oil Made.

Sixty (60) Gallon Capacity Oil Tanks.

PATENT PUMP.

Write for Showcards.

See page 100.

ISAAC A. SHEPPARD & CO.

Eastern Ave. and Chester St., Baltimore.

EXCELSIOR STOVE WORKS

AND

BLOWWARE FOUNDRY,

MANUFACTURERS OF

Excelsior Cook Stoves,
Ranges, Heating Stoves, &c.

CORRESPONDENCE WITH THE TRADE SOLICITED.

See page 128.

ARMSTRONG JAS. & CO.

SOAP

—AND—

CANDLE

111 & 115 Concord St.

MANUFACTURERS.

BABBITT B. T.

MANUFACTURER

BEST SOAP

×SOAP×^{TRADE}1776^{MARK.}POWDER

407 E. Lombard St., Exchange Pl.

PURE POTASH, &c.

LIPPS CHRIS.

LOOKOUT, EXTRA PALM,
VICTORY, NATIONAL

—AND—

SNOW FLAKE

Baltimore.

SOAPS

WEBB JAMES & CO.

ESTABLISHED 1810.

STEAM SOAP WORKS

OUR BRANDS:

OVAL OLIVE, EXTRA FAMILY,
OX OLIVE, ROSE LAUNDRY.

Enser and Chew Sts.

(THESE ARE PURE SOAPS.)

SPICES AND FANCY GROCERIES.

MARKELL BROS.

IMPORTERS AND MANUFACTURERS

SPICES

—AND—

FANCY GROCERIES.

3 & 5 E. Lombard St.

(Successors of Charles Markell & Sons.)

See pages 24 and 144.

See article on page 28. Also on pages 58 and 60.

ISAAC A. SHEPPARD & CO.

Excelsior Stove Works

AND

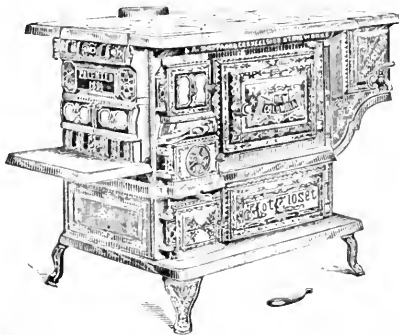
HOLLOWWARE FOUNDRY,

S. W. COR. EASTERN AVENUE AND CHESTER STREET,
BALTIMORE, MD.

MANUFACTURERS OF



EXCELSIOR COOK STOVES,



ROYAL, COLUMBIA and WASHINGTON PORTABLE RANGES AND A LARGE VARIETY OF HEATING STOVES.

CORRESPONDENCE WITH THE TRADE IS SOLICITED.

See page 126.

GLASS D. W. & CO.

MANUFACTURERS OF
STATIONERY

SCHOOL SUPPLIES.

Balto., Chicago & San Francisco.

A. S. P. CO.

GLASS D. W. & CO.

IMPORTERS OF
FANCY GOODS,

CHRISTMAS CARDS, &c.

Balto., Chicago & San Francisco.

A. S. P. CO.

OGLE GEORGE A.

EVERYTHING IN THE PAPER LINE
—FROM—

LINEN NOTE PAPERS TO BUILDING
PAPER, TARRED FELTS, &c.

3 S. Charles Street.

Agents for Pink's Sample Envelopes and Wilcox
Sample Boxes.

STOVES, RANGES, Etc.

ARMIGER R. & SON.

GENERAL SOUTHERN AGENTS

—OF THE—

KEELY STOVE CO.

7 E. Lombard St., near Charles.

STOVES, RANGES, HEATERS.

BIBB B. C. & SON.

Established 1851.

STOVE

Light and Balderston Streets.

FOUNDERS.

BIBB B. C. & SON.

BIBB'S CELEBRATED ORIGINAL
BALTIMORE

FIRE-PLACE HEATERS.

Light and Balderston Streets.

To Warm Upper and Lower Rooms.
The Handsomest and Most Economical Coal
Stoves in the World.
Marbleized Slate Mantels. New Designs.

W. C. ROBINSON & SON,

217 SOUTH STREET,
BALTIMORE.

OLDEST OIL HOUSE IN THE CITY.

BUSINESS ESTABLISHED 1832.

Manufacturers and
Dealers in **OILS** of every kind,
for all uses.

Correspondence Solicited.

See page 98.

SWINDELL BROS.

10 East Lombard Street, Baltimore,

MANUFACTURERS OF

WINDOW GLASS,

DRUGGISTS' ^{FLINT}_{GREEN} GLASSWARE,

BEER BOTTLES, ^{OR ANY}_{OTHER} BOTTLES,

FRUIT JARS, Etc.

See page 68.

BIBB B. C. & SON.

Light & Balderston Sts.

MANUFACTURE THE CELEBRATED
 STONEWALL, VIRGINIA,
 SOUTHERN GIRL, SOLID
 SOUTH, GRAND EMERALD
 and DERBY COOK STOVES.
 Heating Stoves in great variety, for wood and coal.

HUBBARD ALVA & CO.

116 N. Howard St.

HOT-AIR FURNACES

For Residences and Public Buildings.

COOKING RANGES

AND FIRE-PLACE STOVES.

**The Leibbrandt & McDowell
Stove Co.**

25 E. Pratt Street.

MANUFACTURERS OF THE
 "FARMER GIRL," "OUR FRIEND,"
 "ORION" and "VICTOR"
 COOK STOVES.
 "SIGNET," "BEACON," "TRULY YOURS,"
 "MUTUAL FRIEND" and "OPAL"
 HEATING STOVES.
 A full line of Stoves suitable for all markets.

SEXTON S. B. & SON.

511 to 519 W. Conway St.

MANUFACTURERS OF
 ❖ STOVES ❖
 AND
 Fire-Place Heaters.

SHEPPARD ISAAC A. & CO.

Eastern Ave. and Chester St.

**STOVE
FOUNDERS.**

See pages 128 and 126.

WEISKITTEL A. & SON.

Alicanna & Washington Sts.

MANUFACTURERS OF
 STOVES, RANGES, HEATERS,
 AND THE
 PEARL COOK.

WEISKITTEL A. & SON.

Alicanna & Washington Sts.

MANUFACTURERS OF
 Southern Hollowware,
 FIRE DOGS, CALDRONS,
 AND THE
 WORLD COOK.

The Red "C" Oil Manuf'g Co.

40 S. Calvert St., Baltimore, Md.,

PROPRIETORS OF THE FOLLOWING WELL-KNOWN BRANDS OF

BURNING OILS:

EXTRA BRIGHT KEROSENE,
PIONEER SAFETY,
EXCELSIOR SAFETY,
HEADLIGHT A,
THE WHITE "C" OIL,
THE RED "C" OIL.

MACHINERY OILS:

BRIGHT ENGINE,
GOLDEN CROWN ENGINE,
EXTRA GOLDEN MACHINE,
MONARCH ENGINE,
MOGUL ENGINE,
EXCELSIS ENGINE,
A & B CYLINDER OIL.

EXTRA DEODORIZED STOVE FLUID. Send a Trial Order.

Maryland Fertilizing and M'f'g Co.

30 S. HOLLIDAY ST.,

MANUFACTURERS OF

FERTILIZERS

OF ALL KINDS.

FERTILIZING CHEMICALS.

See page 56.

SANDERS & GEORGE. **TEAS**

26 E. Lombard Street.

WHOLESALE.

Terra-Cotta Sewer Pipe, Fire Bricks, Etc.

Balto. Terra-Cotta Works.

Foot of Cross St.

MANUFACTURERS OF
STOVE BRICK LININGS,
FIRE BRICK, SEWER PIPE,
Fire-Clay Chimney Pipe, Etc.

CLARKE WM. WIRT & SON.

115 S. Gay Street.

IMPORTERS AND DEALERS IN
SALT-GLAZED SEWER PIPE,
DRAIN TILE, ETC.

FIRE-CLAY GOODS.

GLASSEN H. W. & CO.

515 to 521 S. Howard Street,
NEAR BARRE ST.

FIRE-CLAY CHIMNEY PIPE,
CHIMNEY TOPS,
—FLUE LINING—
FIRE BRICK. SEWER PIPE, &c.

See article on pages 12, 14 and 16.

See article on pages 38, 40 and 42.

W. P. HARVEY & CO.

BALTIMORE, CHICAGO and KANSAS CITY,

PACKERS

AND

LARD REFINERS

SMOKED AND DRY SALTED MEATS,
MESS PORK & FAMILY BEEF, SUGAR-CURED MEATS,
LARD, CHEESE, BUTTER, Etc.

See page 20.

ESTABLISHED 1850.

LISTER'S FERTILIZERS,

Standard Phosphate, Ammoniated Dissolved Bone,
U. S. PHOSPHATES,

Fresh Bone Super-Phosphate of Lime and Celebrated Ground Bone.

THE BEST FERTILIZERS NOW IN USE.

Lister's Agricultural Chemical Works—Factory: Newark, N. J.

OFFICE AND WAREHOUSES:

202-206 BUCHANAN'S WHARF, - - - - - BALTIMORE.

Send Address for Our "AGRICULTURAL PROGRESS."

See page 52.

FULLER WILLIAM & CO.

111 S. Charles Street.

Importers and Dealers in
TIN PLATE, SHEET IRON,
WIRE, ZINC, ETC.

LYON, CONKLIN & CO.

27 & 29 Light Street.

TIN PLATES,
SHEET IRON,
WIRE, STAMPED AND JAPANPED
WARE, ETC.

PARKER E. L. & CO.

201 S. Charles Street.

IMPORTERS AND DEALERS IN
TIN PLATE,
—SHEET IRON—
Wire, Stamped Ware, Etc.

TINWARE.

SEE ALSO TIN PLATE, ETC.

BREWINGTON H. S. & CO.

Sharp & West Streets.

MANUFACTURERS OF
TINWARE.

Plain, Japanned, Stamped and 5 and 10-
cent Counter Goods in Tin,
Specialties.

KEEN & HAGERTY.

30 S. Calvert Street.

IMPORTERS OF
TIN PLATE AND METALS.

MANUFACTURERS OF
TINWARE,
WHOLESALE.

MATTHAI, INGRAM & CO.

120 Hanover Street.

Manufacturers of a full line of
SUPERIOR QUALITY
TINWARE.

BUHRS **PATAPSCO FLOURING MILLS** **ROLLS**
1774 1882
ESTABLISHED 1774

C. A. GAMBRILL M'F'G CO.

Patapsco Mill A, Ellicott City, Md.

Patapsco Mill B, Baltimore, Md.

Patapsco Mill C, Orange Grove, Md.

DAILY CAPACITY, 2200 BBLs.

OF THE BEST FLOUR IN AMERICA.

See page 62.

ESTABLISHED 1832.



Is giving universal satisfaction. Dealers state that their sales have largely increased since they began handling it. *SEND FOR PRICE LIST.*

G. CASSARD & SON,

517 to 525 W. Baltimore St., }
504 to 508 German St., } BALTIMORE, MD.

Curers of the Celebrated "STAR BRAND" Mild-Cured Hams and Breakfast Bacon.

TAYLOR DAVID B. & CO.

Manufacturers of the best

RIVETED TINWARE

And Dealers in

27 S. Howard St.

STOVES AND HOLLOWWARE.

TOBACCO, CIGARS, Etc.

WISCHMEYER ED. & CO.

TOBAGGO

COMMISSION & MERCHANTS.

CHEAP

21 S. Calvert St.

PENNSYLVANIA CIGARS A SPECIALTY.

See article on pages 12, 14 and 16.

See article on page 28.

See article on pages 30, 32, 34 and 36.

See article on pages 58 and 60.

PURE FERTILIZERS FOR ALL CROPS.

R. J. BAKER & CO.

40 South Charles St.,

BALTIMORE.

⇒ Fertilizers, Fertilizing Materials ⇐

SPECIAL FORMULAS COMPOUNDED.

See page 54.

FOUTZ'S MEDICINES.

FOUTZ'S

Celebrated HORSE AND CATTLE POWDERS.

FOUTZ'S LINIMENT.

SHRINER'S BALSAMIC COUGH SYRUP.

SHRINER'S INDIAN VERMIFUGE.

DAVID E. FOUTZ, Proprietor, BALTIMORE.

For full particulars see page 48.

SCHWARZ HENRY.

15 E. Baltimore St.

IMPORTER OF

Toys, Lawn Tennis,

CHILDREN'S CARRIAGES,

Bicycles, Tricycles, Velocipedes, Boys'
Wagons, Etc.

UMBRELLAS, PARASOLS, Etc.

SEE ALSO WHIPS, ETC.

GANS LEWIS & BRO.

46 W. Baltimore Street,
Near Hanover St.

Umbrellas
and Parasols.

Agents for Hirsh & Brothers' Celebrated
—UMBRELLAS AND PARASOLS—
Orders by Mail Solicited.

UPHOLSTERY GOODS.

DUER JOHN & SONS.

24 S. Charles St.

Furniture Coverings

—CURTAINS—

Drapery Goods, Etc.

WHOLESALE.

UPHOLSTERERS—FINE WORK.

MOHLER & HURLBUTT.

14 N. Charles St.

IMPORTERS OF

UPHOLSTERY FABRICS

AND LACE CURTAINS.

Designers of Draperies and Portieres, Window
Shades, Cornices and Poles.

Furniture Re-upholstered in a Superior Manner.

D. G. ADELSBERGER,

No. 314 W. FRANKLIN ST., BALTIMORE,

Practical Mechanic, Engineer & Draughtsman,

BUILDER OF

WATER WORKS BY NATURAL FLOW, WIND OR STEAM POWER, AND HYDRAULIC RAMS,

For Towns, Railroads, Country Seats, Institutions, Asylums, Factories, Farms and Private Residences.



To which will be attached Fire-Plugs, Steam Fire Pumps, Hand Fire Engines, Hand Pumps, Hose, Hose Carriages, etc., etc., for Fire Protection. Reservoirs, Stand Pipes, Wooden and Iron Tanks constructed of any required capacity. Water Supply Pipe, Tank Work and Pumping Machinery for Railroad Water Stations.

Water Pipe, Steam Pipe and Tank Work for Paper Mills, Canning Factories, Breweries, Distilleries, Dyeing Factories, Coal Oil Works, Acid Works, Brick Yards, and all manufacturing works, in Brass, Copper, Lead or Iron Metal.

Steam Engines and Boilers for all purposes. Steam Pumps, Wind-mill Pumps, Hand and Power Pumps, and Pumping Machinery, Apparatus for distilling Pure Water, and other Apparatus for Laboratories. Turck Water Motors for running Sewing Machines, Printing Presses, Mcat Cutters, Coffee Mills, etc., etc. Gas and Gasoline-Gas Engines for pumping water and light power work. Automatic Air Compressors for Restaurants, Doctors, Jewelers, etc., etc.

PLUMBING in all its various branches, in Lead, Brass, Copper and Iron Metals, and Plated and Galvanized Work. Cement and Terra-Cotta Work. Lift and Force Pumps, Hydrants, Street Washers, Gum Hose, Ornamental Fountains, Basins and Lawn Sprinklers. DRAIN and SEWER Pipes of any required size, laid in the best manner. Also Charcoal Wells.

Inventor of Filtering Machines for Sandy and Quicksand Wells. Inventor of the Latest Improved Hydraulic Rams, by which one half more water can be elevated than by any other ram made. This improvement can be placed on most all rams made. Also inventor and lately patented Water Closet Tank, which is self-acting, causing a fore and after wash, regulates the quantity of water to be used; positive double action, needs no attention, cannot get out of order. No basins, plungers, or complicated fixtures needed. It is thoroughly sanitary, and considered by persons competent to know, to be the best ever invented. Architects, builders and others are invited to see it in operation.

STEAM HEATING of Public and Private Buildings, by direct or indirect heat, with round or flat coils, or massed tubes of wrought or cast Radiators of iron or brass metal, on the latest approved principles. Hot-air Heating, by Hot-air Furnaces or Fire-plate Heaters. French Steel Plate and Cast-Iron Cooking Ranges and Apparatus, Hot-water Boilers and Steam-Cooking Apparatus. Coffee Roasters, etc.

VENTILATION of School Houses and Public and Private Buildings by the most approved philosophical and common-sense plan, without any complicated fixtures, by introducing pure, fresh atmosphere in warm weather, and pure, fresh, warm atmosphere in cold weather, and forcing out all impure and poisonous air. Ventilation of Wells, by which means all foul air and the deadly carbonic-acid gas is forced out.

One of my specialties is the old reliable Self-regulating HALLADAY Pumping and Geared Wind Mills, for Pumping Water, Shelling Corn, Grinding all kinds of Grain, Cutting Hay, Fodder, Sawing Wood; in fact, turning all kinds of machinery.

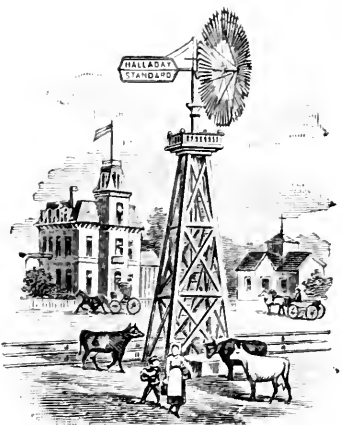
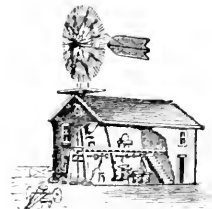
The Halladay has proven itself to be the best Wind Mill ever erected, and has more power.

At the late Agricultural Fair held at Philadelphia, in a public trial the Halladay pumped one-half more water than either of its five competitors. It is guaranteed in material and workmanship, and to do all it is recommended, send for a circular.

Also for sale the IXL Chopping Mill, the IXL Feed Cutter, and the IXL Corn Sheller, Saw Tables, etc., etc.

Repairs of all the above kind of work attended to.

Inventor of the celebrated Milk Cans or Cream Raiser, by which milk can be kept sweet five days.



Drawings and Estimates made and Plans furnished for all of the above work.

BERRY BROTHERS.

22 E. Lombard St.

MANUFACTURERS OF
✻ VARNISHES ✻

And the Only Genuine, Celebrated

HARD-OIL FINISH.

FACTORIES: DETROIT, MICHIGAN.

MCCREARY J. A. & CO.

23 S. Charles St.

MANUFACTURERS OF
VARNISHES,

DRYERS

AND

PAINTS.

WILLIAMS Z. F.

42 S. Charles St.

—BROKER IN—

VARNISHES,

Paints, Glass, Drugs, Etc.

See pages 108 and 114.

WATER WORKS, Etc.**ADELSBERGER D. G.**

314 W. Franklin St.

WATER WORKS,

—BY—

NATURAL FLOW, WIND OR
STEAM POWER.

See page 140.

WEDDING & VISITING CARDS, Etc.

SEE ALSO STATIONERS.

GRIFFIN, CURLEY & CO.202 E. Baltimore St.,
Near Calvert St.ENGRAVERS AND PRINTERS OF
WEDDING AND VISITING CARDS.
FINE WORK ONLY.*Griffin, Curley & Co.*

PAPER! PAPER!! PAPER!!!

JOHN A. DUSHANE & CO.

40-44 South Charles Street,

BALTIMORE.

PAPER OF ALL KINDS,
FOR ALL USES.

OUR MILLS:

Maryland Mills.

Woodbine Mills,

Forge Mills,

Antietam Mill,

Caledonia Mill,

Ivy Mill.

Eagle Mill,

See page 112.

ESTABLISHED 1855.

GEORGE O. STEVENS,

Manufacturer and Dealer in

Doors, Sash, Blinds,

Frames, Mouldings, Mantels,

Stair Work, Church Work,

Pews, Pulpits, Etc.

STAINED and FANCY GLASS, Etc.

115 and 117 Light St., near Pratt St.

See page 26.

STINSON E. & CO.

BALTIMORE WHEEL FACTORY,
Manufacture
Plain Wood Hub, Warner Patent,
Brown's Shell Band
—AND—
Secret Banded Wheels,
SPOKES, RIMS, ETC.

331 to 335 North St.

WHIPS AND UMBRELLAS.

SEE ALSO UMBRELLAS AND PARASOLS.

MILLIKIN JAS. H. & SONS.

MANUFACTURERS OF

Whips

—AND—

Umbrellas.

20 Light Street.

WINDOW SHADES, Etc.

SEE ALSO PAPER HANGINGS.

ARNOLD W. E. & CO.

MANUFACTURERS OF

WINDOW SHADES and TRUNKS.

DEALERS IN

CORNICE POLES,

20 S. Charles Street.

TABLE OIL CLOTHS, ETC.

DENNIS B. M. & CO.

WINDOW SHADES,
CORNICES, ETC.

340 N. Charles St.

✦ PAPER HANGINGS ✦

MARSHALL JOSEPH W.

Manufacturer and Dealer in

WINDOW SHADES and FIXTURES,
SHADE CLOTHS,

Hollands and Upholstery Goods.

Charles & German Sts.

AND MANUFACTURER OF TRUNKS.

MUSTARD,

→ SPICES, FANCY GROCERIES →

ESTABLISHED 1812.

MARKELL BROS., SUCCESSORS OF Chas. Markell & Sons,

Importers and Manufacturers,

3 and 5 E. LOMBARD ST., BALTIMORE.

MUSTARD! MUSTARD! MUSTARD!

AND PURE GROUND SPICES A SPECIALTY.

See page 24.

200 VARIETIES OF
BISCUITS, CRACKERS AND FANCY CAKES.

Maryland Steam Bakery,

ESTABLISHED 1820,

JAMES D. MASON & CO.

PRATT STREET,

OPPOSITE MALTBY HOUSE,

BALTIMORE.

See page 22.

BALDERSTON H. & SON.

Established 1793.

Crimped Wire for Windows,

DOORS AND OFFICE RAILING.

Screens for Banks, Churches, Etc.

122 S. Calvert Street.

DUFUR & CO.

WIRE RAILING,

Ornamental Wire Works,

WIRE GOODS GENERALLY.

113 & 115 N. Howard St.

WOODENWARE, Etc.**LORD CHAS. W. & CO.****WOODENWARE,**And Sole Agents for
Perfection Scales, Wolf's Acme Blacking,
Salter's Patent Demijohns,
American Washing Machines
Thomas' Blueing and Ink,
Leader Clothes-Wringers,
North Star Washboards,
Cooley Creamers.

104 & 106 E. Lombard St.

TOTTLE WM. A. & CO.

Manufacturers and Jobbers of

WOOD & WILLOW WARE.

Proprietors of

118 Hanover Street.

THE CROWN BRUSH WORKS.

WOOL DEALERS.**MARCUS HENRY & SON.**

DEALERS IN

WOOL,

—HIDES—

FURS AND SHEEPSKINS.

16 E. Camden St.

417 & 419 W. Conway St.

NERVOUS DEBILITY!

NERVOUS DEBILITY!



FOR
NERVOUS PROSTRATION
AND
EXHAUSTED VITALITY
USE

Dr. FRANCIS BOUDALT'S
FRENCH PREPARATION

Prepared only by Dr. FRANCIS BOUDALT,
PLACE VENDOME, 45, - - PARIS.
CURE GUARANTEED.

Importers and
General Agents, **JOHN B. HURTT & CO.**
DRUGGISTS AND CHEMISTS,
417 EAST BALTIMORE STREET, NEAR GAY STREET.
BALTIMORE, MD., U. S. A.
ESTABLISHED 1864.

SEND FOR CIRCULAR. *ENDORSED BY ALL PHYSICIANS.*
14,769 Bottles Sold Last Year. Price per Bottle **\$2**, three Bottles for **\$5**.

WILL CURE *Weakness of Memory, Difficulty of Recalling Names or Dates, Inaptitude for Business or Study, Lameness, Weakness, or Pain in the Back or Loins; Weakness of the Organs, with Deficient, Feeble Powers; Languor, Easy Fatigue from Mental or Physical Labor, Loss of Nervous Power and General Tone of the System, Weakness from Loss of Vital Fluids, Involuntary Vital Losses at Stool or during Urination, Involuntary Vital Losses at Night during Dreams, Weak or Failing Powers and Threatened Impotence, Prostration and Debility from Overwork or Mental Effort.*

VICTORIES EVERYWHERE.

This Preparation has received the Highest Awards and Testimonials over them all at the Exhibitions below named :

- | | |
|----------------------|------------------|
| PHILADELPHIA...1876. | PARIS1878. |
| MELBOURNE.....1880. | MATANZAS.1881. |
| VIENNA.....1883. | MEXICO.....1882. |



TD⁶

THE MONUMENTAL CITY

OPENS WIDE HER GATES

AND GIVES TO ALL A WELCOME.



“WHO COMES WITHIN HER WALLS IS SAFE.”

